



# OPPORTUNITY KNOCKS

*Sale* II



**DECEMBER 20, 2021**  
AT THE RANCH IN LANIGAN, SK  
SALE BEGINS AT 3:00 PM

# Sale Day Information

Monday, December 20, 2021  
At The Ranch, Lanigan, SK | 3:00 PM

## AUCTIONEER:

Chris Poley 306.220.5006

## RINGSIDE:

Shane Michelson 403.363.9973  
Ben Wright 519.374.3335  
Nate Marin 306.869.7130

## SALE MANAGEMENT:

### T Bar C Cattle Co. Ltd.:

Chris Poley 306.220.5006  
Shane Michelson 403.363.9973  
Ben Wright 519.374.3335  
Chad Wilson 306.577.1256

## SALE DAY PHONES:

Kevin Blair: 306.365.7922  
Blake MacMillan 306.528.7484  
Baxter Blair: 306.699.7807  
Craig Blair 306.699.7607  
Chara Blair 306.699.7037  
Bryan Willms: 306.492.7504  
Tracey Willms: 306.380.6772  
Martin Koyle 306.519.7789  
Maguire Blair 306-360-7716  
Scott Blair: 306.365.7649  
Calla Blair: 306.365.7799  
Rhett Jones 306-629-7878

## HOTEL:

**Manitou Springs Resort**  
302 MacLachlan Ave  
Manitou Beach SK S0K 4T1  
306.946.2233

*Come for the Cattle & Stay for the Hospitality  
Supper at 5:00 pm  
Music by Nolan Blair to follow*

## SALE CONSULTANTS

### Bohrson Marketing

Scott Bohrson 403.370.3010  
Jay Sibbald 403.899.2625  
Taylor Richards 306.821.4169  
Rob Voice 306.270.6082

### OBI Livestock Ltd.

Mark Holowaychuk 403.896.4990  
Roger Peters 403.828.9815  
Kurt Pedersen 780.209.9999

### Mackenzie Sales Management

Bryan Mackenzie 403.627.8266

### First Class Cattle Marketing Ltd.

Shay Martindale 780.812.4581  
Kyle Boss 587.432.6160  
Darnell Forward 403.795.8030

## US Representative

Kiley McKinna 402.627.8266

Internet Bidding Available  
**DLMS**  
www.dlms.ca  
For more information call DLMS:  
Mark Shologan 780.699.5082 or  
DLMS Purebred Team 780.991.3025

**DVAuction**  
Broadcasting Real-Time Auctions  
Visit [www.DVAuction.com](http://www.DVAuction.com)  
and Register Today!  
For General Questions Please Contact Our Office:  
(402) 316-5460 or [support@dvauction.com](mailto:support@dvauction.com)

## ONLINE BIDDING:

Mark Shologan  
780.699.5082  
[www.dlms.ca](http://www.dlms.ca)

## ONLINE BIDDING

DV Auction  
Sarah Hasson  
306.681.5340  
Tech Support  
402-316-5460  
[sarah@goldenthread.ca](mailto:sarah@goldenthread.ca)



**OPPORTUNITY  
KNOCKS**  
*Sale II*





## *Welcome from Blairs. Ag*

It is my honour to welcome you to Opportunity Knocks II.

For 2021 we are proud to welcome Wilbar, Blairswest, Double B and Koyle Farms to make the sale and the offering one you won't want to miss.

As you scroll through the catalog take note of each breeders commitment to making this sale a special one. Each consignor believes in the role that embryos transfer plays in genetic advancement and it's evident in the offering.

All cattle will be available for viewing at Blairs.Ag Cattle Co. prior to the sale.

We are really excited to have you join us on sale day and encourage you to reach out to any of the sales team & consultants and trust that they are committed to your future success.

The purebred industry in North America is alive with young breeders developing their skills and showing their commitment to the future of the Angus & Red Angus business. We would enjoy a conversation with you about your needs and how we can help ensure your success over the next decade or more. As you can tell from the catalog, we are big on families and we would like to play a part in the success of yours.

**Kevin Blair**

## *From the desk at T Bar...*

Welcome to the 2nd Annual Blairs.Ag Cattle Company "Opportunity Knocks" Female Sale on Monday, December 20, 2021, at the ranch headquarters, Lanigan, Saskatchewan. The folks at Blairs.Ag along with Wilbar, Blairswest, Double B and Koyle Farms have come together to offer an outstanding lineup of black and red opportunities that are genetically exciting and phenotypically unsurpassed.

Over the past decade, these breeding establishments have used embryo transfer to enhance and enlarge proven cow families and through acquisitions and success of superior, prolific donors this has allowed them the opportunity to share their successes with you. To list all the features in this event would document pages and as you browse through this catalogue, you will find many front pasture opportunities... some with an international flare.

Each of these breeding operations have a competitive nature.... more to say, a highly successful nature and that quality and success has been evident in the fall show season. To truly appreciate the high standard of quality of this offering, one must see them in their natural environment... plan to visit any operation and preview their cattle. Each herd will be represented at Canadian Western Agribition, stop by their displays, and have a visit or give them a call. They love to talk Angus.

Whether you are looking for a competitive show prospect, a few from the many deep, broody bred females carrying an exciting coupon, a "one-of-kind" flush or embryos from great donors, opportunity abounds. This is an opportunity you must not miss. Remember that December 20th is four shopping days from Christmas and eleven days from year end... take the opportunity to save a few tax dollars while adding high value seedstock to your operation.

Plan to enhance your program at "Opportunity Knocks II", whether it be with us in person, online or on the phone. Do not hesitate to give any of the T Bar C Team a call and we will be pleased to assist you in a professional and confidential manner with your selections.

**Chris Poley**

# Wilbar Pick of the Herd Flush



WJD 781C



WJD 53F



WJDO 851H



617Y



IMP 964B



WJD 211E

## 1

We are very excited to offer a pick of the herd flush in the Opportunity Knocks. We haven't offered this chance since the fall Red Wilbar Longitude 646Y was slapped Supreme Champion at Agribition (his mother was the pick that year). Black, Red or Red Carrier, every cow is on the table as an option for you to flush, even the kids' cows and partnership cattle that reside here. No exceptions.

When Jake & Bernice started the herd in 1963, they believed in sound feet & udders, fertility and productivity. We have continued to use those as guiding principles while also focussing on structure, rib shape & overall mass.

Cow families are important around here. In fact, we even have a few cow families that go to the start of our registered cow herd.

You can choose from cows that have raised National Champions, high selling bulls and high selling heifers. There are also cows sired by National Champions, high selling bulls and even the first daughters of the International Champion, South Point. Our top income cow of all time is an option as well as the dam and flushmates to Wilbar Greenlight 839H! You'll have access to genetics we have kept exclusive to our herd, making them outcross options for many.

Our cow herd has produced breed legends like Kodiak 5R and Cora 443P and it's only gotten stronger since then.

Writing all of this feels a lot like bragging but we are very proud of the herd of cows you'll get to choose from. We have culled strictly, expanded our embryo program and sought out unique herd sires. We'd love to walk you through the cowherd, talk about your options and make sure you pick the cow that best fits your needs.

**Terms: Guarantee 6 viable embryos. 50% down sale day, 50% due at the time of flushing. Flush costs are the responsibility of the purchaser. Flush must be completed before May 1, 2022.**

OFFERED BY WILBAR CATTLE CO

# Wilbar Pick of the Herd Flush



WJD 507B



WJD 217X



WJDO 463G



WRAZ 94Z



SIES 800F



WJD 807C



BW 869Z



WJD 236E



WJD 584B



WJD 816C



WJD 500B



WJD 48Z



*Two IVF Flushes Sell*

*Lot 282A*

## BAR-E-L ERICA 74A

OFFERED BY BLAIRS.AG CATTLE COMPANY & BLAIRSWEST LAND & CATTLE

2

2A

YHB 74A	19/02/2013	745491
S A V BISMARCK 5682	G A R GRID MAKER	S A V ABIGALE 0451
BAR-E-L NATURAL LAW 52Y	BAR-E-L MCC 365 ICON 20H	DOUBLE FOUR DUCHESS 12G
BAR-E-L MAGNOLIA 143K	S A R FAME 2089	BARBARA OF PEAK DOT 642F
PEAK DOT FAME 2N	HF ERICA 339T	HF ERICA 46P
	ERICA OF RANNOCH 122C	

What a wild ride! Erica has taken us on quite the adventure. She graced the backdrop at many junior shows including Summer Synergy, Stampede, Showdown as well as many other summer shows and the fall shows of 2015 and finally culminating with the prestigious honor of Miss Angus Champion of the World. We fell in love with her from the start, and it didn't take long until the rest of the world was admiring her as well. Erica is an elegant easy doing elite female. Her progeny have gone on to be foundation breeding pieces in many herds. Don't miss this exciting opportunity to add her genetics to your program. Red carpet and a solid return on investment all wrapped up in one fancy package.

CE	BW	WW	YW	MILK
4.0	3.6	57	91	26



Erica x NA Calf



Erica - 2015 CWA Owned by Blairs.Ag and Blairswest Land & Cattle



Erica x National Anthem - Owned by Hollinger Land & Cattle, CSI Angus and Schaff Valley Angus



Blair's External Law 266F - Owned by Duff Cattle Co.



Blair's Martial Law - Owned with Duff Cattle Co.



Blair's Rocco 268F - Owned with Skull Creek Angus

*The Erica's Sell as Lots 2-15*



*Lot 3*

If you are a purebred breeder and you have a heart beat, you will know the impact Bar E-L Erica 74A has had on the programs of Blairs. Ag Cattle and Blairswest Land & Cattle. This three year old daughter of Duff Napoleon and Erica 74A is my pick of the entire offering and we will be retaining an interest to add her influence to our embryo program. Erica 265F will play a significant role in our program going forward and her Desert Storm daughter is the proof needed to validate her worth.

**AI Bred on May13, 2021 to Mc Cumber Tribute 702.**

**Exposed to Flueury Bardolene 82G from May 26-July 29, 2021. Favorable to AI due late February**

**Retaining 50% embryo interest  
OFFERED BY BLAIRS.AG CATTLE COMPANY**

**3**

**BLAIR'S ERICA 265F**

BBC 265F      13/02/2018      2040582

DUFF DISTINCTION 9105  
**DUFF NAPOLEON 232**  
 DUFF EUR 443 MERLE 808  
 BAR-E-L NATURAL LAW 52Y  
**BAR-E-L ERICA 74A**  
 HF ERICA 339T

DUFF BASIC INSTINCT 6501  
 DUFF NL B351 LADY POP 619  
 DUFF NEW EDITION 6108  
 DCC NL 652K MERLE 443  
 S A V BISMARCK 5682  
 BAR-E-L MAGNOLIA 143K  
 PEAK DOT FAME 2N  
 HF ERICA 46P

CE	BW	WW	YW	MILK
8.0	1.7	51	80	19

**3A**

**BLAIR'S ERICA 550J**

BBC 550J      10/03/2021      2195981

BAR-H CROSSFIRE 63A  
**SIX MILE DESERT STORM 94D**  
 SIX MILE FALLING STAR 219Y

DUFF NAPOLEON 232  
**BLAIR'S ERICA 265F**  
 BAR-E-L ERICA 74A

S TITLEST 1145  
 HF TIBBIE 93U  
 S A V HEAVY HITTER 6347  
 ROSE HILL DARK STAR 22P  
 DUFF DISTINCTION 9105  
 DUFF EUR 443 MERLE 808  
 BAR-E-L NATURAL LAW 52Y  
 HF ERICA 339T

CE	BW	WW	YW	MILK
11.0	-0.1	47	83	19



*Lot 3A*

Take a serious look at the proof in the pudding. This Six Mile Desert Storm 94D daughter only started at 60 lbs but quickly turned it on and brings everything together needed to make her a special one. Expect a lot from this girl as she has the base width and dimension we search for everyday and comes from royalty.

**OFFERED BY  
BLAIRS.AG CATTLE COMPANY**



Sale Feature! You may remember this one from fall of 2015 her and her mom Erica 74A were crowned National Champion Angus Female. This duo went undefeated in the Black Angus show at Brandon Ag Ex, Lloyd Stockade, Farm Fair International and Candian Western Agribition while also placing Top 10 in the RBC Supreme Challenge. This cow screams power while being stout and sound on the ground. The apple doesn't fall far from the tree in terms of udder quality and teat placement. Make sure to check this one out on sale day.

Parent Verified  
**AI Schiefelbein Attractive 4565 on April 25, 2021 (favourable) PE Brooking Firebrand 0124 May 10 - May 30, 2021**  
 OFFERED BY  
 BLAIRSWEST LAND & CATTLE  
 BLAIRS.AG CATTLE COMPANY



**4**

**BLAIRSWEST MISS ERICA 400C**

MJNB 400C      08/05/2015      1844623

EXAR PIT BOSS 409  
**MICH PIT BOSS 121Y**  
 JOHNSTON 9440 ANNIE K 0553J

BAR-E-L NATURAL LAW 52Y  
**BAR-E-L ERICA 74A**  
 HF ERICA 339T

EXAR SUDDEN IMPACT 1537  
 WK WINNIE 7305  
 R R SCOTCHCAP 9440  
 JOHNSTON 12U ANNIE K 553F  
 S A V BISMARCK 5682  
 BAR-E-L MAGNOLIA 143K  
 PEAK DOT FAME 2N  
 HF ERICA 46P

CE	BW	WW	YW	MILK
-3.0	5.6	49	88	22

**4A**

**BLAIRSWEST MISS ERICA 1J**

MJNB 1J      19/01/2021      2229749

YOUNG DALE HI DEFINITION 185B  
**YOUNG DALE DEFIANCE 199F**  
 YOUNG DALE GRACE 126Z

MICH PIT BOSS 121Y  
**BLAIRSWEST MISS ERICA 400C**  
 BAR-E-L ERICA 74A

PF HOOVER DAM 041  
 BLACK HAMCO COUNTESS 417T  
 YOUNG DALE PANARAMA 66T  
 YOUNG DALE GRACE 19T  
 EXAR PIT BOSS 409  
 JOHNSTON 9440 ANNIE K 0553J  
 BAR-E-L NATURAL LAW 52Y  
 HF ERICA 339T

CE	BW	WW	YW	MILK
-1.0	4.3	60	102	17

This January Defiance heifer calf is one that speaks power. We think she is very correct in her foot shape and teat size and spread that can make this heifer a very productive producer in the future. A half sib to this female sold in the Brooking Angus Ranch Open Book Invitational Female sale to Dusty Rose Cattle Co. She sells along side her big time dam, You won't want to miss this one.  
 Parent Verified

OFFERED BY  
 BLAIRSWEST LAND & CATTLE  
 BLAIRS.AG CATTLE COMPANY





# BLAIRSWEST ERICA 77J

OFFERED BY BLAIRSWEST LAND & CATTLE

5

MJNB 77J      15/02/2021      2235029

BROOKING BANK NOTE 4040  
**BROOKING FIREBRAND 6068**  
 BROOKING ANNIE K 390

BAR-E-L NATURAL LAW 52Y  
**BAR-E-L ERICA 74A**  
 HF ERICA 339T

CONNELLY EARNAN 076E  
 E A ROSE 918  
 S A V BEST INTEREST 0136  
 SOO LINE ANNIE K 9165  
 S A V BISMARCK 5682  
 BAR-E-L MAGNOLIA 143K  
 PEAK DOT FAME 2N  
 HF ERICA 46P

CE	BW	WW	YW	MILK
2.5	3.4	59	93	25

**SALE FEATURE!!!** 77J is possibly the best heifer calf to walk the land at Blairswest and are happy to offer her up. She has gained lots of friends throughout the summer. She's got the style and power to be highly competitive in the show ring and in the pasture, recently being selected Intermediate Calf Champion at Lloyd stockade, Reserve Black Angus calf at Farm Fair in Legends of the fall calf heifer jackpot. Sired by the 95,000 Brooking Firebrand 6068 that is very highly talked about bulls in the angus breed. Phenotypically 77J is one of the best; super stout and massive bodied while being very attractive through her front end and skeletal structure. Parent Verified Intermediate heifer calf Champion, Farm Fair, Edmonton, AB **Retaining 1/2 Embryo Interest**



Blairswest Erica 77J



Brooking Firebrand 6068 - Sire



*Lot 6*

# BLAIR'S ERICA 516J

OFFERED BY BLAIRS.AG CATTLE COMPANY

Donor cow alert!!! A McCumber Tribute x Bar E-L Erica 74A daughter that is the highest performance heifer in the offering. She is super deep made and stout and will raise both herd bulls and power females.

Entered in CWA

**6**

BBC 516J      22/02/2021      2201415

MC CUMBER TREMENDOUS 2008  
**MC CUMBER TRIBUTE 702**  
 LASSIE 113 OF MC CUMBER

BAR-E-L NATURAL LAW 52Y  
**BAR-E-L ERICA 74A**  
 HF ERICA 339T

O C C TREMENDOUS 619T  
 MISS WIX 2022 HC MC CUMBER  
 O C C MISSING LINK 830M  
 LASSIE 935 OF MC CUMBER  
 S A V BISMARCK 5682  
 BAR-E-L MAGNOLIA 143K  
 PEAK DOT FAME 2N  
 HF ERICA 46P

CE	BW	WW	YW	MILK
8.5	1.3	56	98	29



LASSIE 113



LASSIE 935



# BLAIRSWEST ERICA 8H

OFFERED BY BLAIRSWEST LAND & CATTLE

7

## BLAIRSWEST ERICA 8H

MJNB 8H      26/01/2020      2184675

BAR S RANGE BOSS 4002  
**MERIT WHISKEY 8010F**  
 MERIT SOCIALITE 48X

BAR S RANGE BOSS 1118  
 BAR S PRIDE 0073  
 GDAR INSIGHT 7201  
 MERIT SOCIALITE 4195  
 O C C PAXTON 730P  
 BOHI ABIGALE 6014  
 BAR-E-L NATURAL LAW 52Y  
 HF ERICA 339T

COLEMAN CHARLO 0256  
**BLAIRSWEST ERICA 74E**  
 BAR-E-L ERICA 74A

This high performing Whiskey 8010 daughter is one that will make her way to the top of your list come sale day. Very stout & massive middled with a very unique and powerful presence. The udder quality in this female is quite exciting to think about. Confirmed bred to the 40,000 valued MJT Impressive 813F. Parent Verified **AI'd MJT Impressive 813F-May 1st (favourable) PE May 10-May 30 to Booking Firebrand 0124**

CE	BW	WW	YW	MILK
8.0	1.4	52	87	28



# Erica Embryos



## 8A

**BAR-E-L ERICA 74A X S A V RENOWN 3439**  
4 EMBRYOS 50% GUARANTEE CANADIAN QUALIFIED ONLY

RITO 707 OF IDEAL 3407 7075	R R RITO 707
S A V RENOWN 3439	IDEAL 3407 OF 1418 076
S A V BLACKCAP MAY 4136	S A V 8180 TRAVELER 004
	S A V MAY 2397
	S A V BISMARCK 5682
BAR-E-L NATURAL LAW 52Y	BAR-E-L MAGNOLIA 143K
<b>BAR-E-L ERICA 74A</b>	PEAK DOT FAME 2N
HF ERICA 339T	HF ERICA 46P

OFFERED BY BLAIRS.AG CATTLE COMPANY

## 8B

**BAR-E-L ERICA 74A X S A V Rainfall 6846**  
4 EMBRYOS 50% GUARANTEE CANADIAN QUALIFIED ONLY

COLEMAN CHARLO 0256	O C C PAXTON 730P
<b>S A V RAINFALL 6846</b>	BOHI ABIGALE 6014
S A V BLACKCAP MAY 4136	S A V 8180 TRAVELER 004
	S A V MAY 2397
	S A V BISMARCK 5682
BAR-E-L NATURAL LAW 52Y	BAR-E-L MAGNOLIA 143K
<b>BAR-E-L ERICA 74A</b>	PEAK DOT FAME 2N
HF ERICA 339T	HF ERICA 46P

This is a mating that we think can be very special for the buyer. The Erica 74A X Charlo 0256 mating has worked very well for us resulting in Lot 18 and multiple other progenies. Adding a shot of maternal greatness to the pedigree with Rainfall's dam being S A V Blackcap 4136, which is the number 1 income cow in S A V history. Rainfall combines phenotype, muscle, shape, capacity and pounds. This is one mating you should seriously consider getting your hands on ladies and gentlemen.

**Stored at Trans Ova**  
OFFERED BY BLAIRSWEST LAND & CATTLE



Rocco 268F



Bar E L Erica 74A



# BLAIRSWEST ERICA 84H

OFFERED BY BLAIRSWEST LAND & CATTLE

9

## BLAIRSWEST ERICA 84H

MJNB 84H 01/03/2020 2237641

O C C PAXTON 730P  
**COLEMAN CHARLO 0256**  
 BOHI ABIGALE 6014

BAR-E-L NATURAL LAW 52Y  
**BAR-E-L ERICA 74A**  
 HF ERICA 339T

O C C FOCUS 813F  
 O C C BLACKBIRD 736K  
 SITZ TRAVELER 8180  
 S A V ABIGALE 6062  
 O C C PAXTON 730P  
 BAR-E-L MAGNOLIA 143K  
 PEAK DOT FAME 2N  
 HF ERICA 46P

CE	BW	WW	YW	MILK
6.5	1.8	54	91	26

Sale Feature. Erica 74A x Coleman Charlo 0256 is combination similar to Tom Brady and Rob Gronkowski. This is one we rank very highly around Blairswest in terms of foot and udder quality. Her two full brothers sold in 2017 Power and Perfection for 22,000 to MJT and 14,000 Canadian Sires. This is your chance to tap into this maternal pipeline. Donor female for the taking and right now is your time. Parent Verified **Al'd Schiefelbein Attractive 4565 on May 1, 2021. Exposed May 10 -May 30, 2021 to Merit Whiskey 8010 (favourable)**



Blair's Martial Law 593E - Full Sib

10

### BLAIR'S ERICA 580H

BBC 580H 01/03/2020 2193776

BAR-H CROSSFIRE 63A  
**SIX MILE DESERT STORM 94D**  
 SIX MILE FALLING STAR 219Y

BAR-E-L NATURAL LAW 52Y  
**BAR-E-L ERICA 74A**  
 HF ERICA 339T

S TITLEST 1145  
 HF TIBBIE 93U  
 S A V HEAVY HITTER 6347  
 ROSE HILL DARK STAR 22P  
 S A V BISMARCK 5682  
 BAR-E-L MAGNOLIA 143K  
 PEAK DOT FAME 2N  
 HF ERICA 46P

CE	BW	WW	YW	MILK
6.0	3.4	49	90	23

Erica 74A daughter alert!  
 I think you will find a tremendous amount of consistency and future potential in these Erica daughters. Erica 74A is becoming one of the most talked about and sought after Angus donors in the world.  
**AI Bred on May 13 to HF Entertainer 54H. Exposed to Merit Whiskey 8010F from May 31-July 29. Favorable to Pasture due mid March.**  
 OFFERED BY BLAIRS.AG CATTLE COMPANY



11

### BLAIR'S ERICA 590H

BBC 590H 03/03/2020 2173882

BAR-H CROSSFIRE 63A  
**SIX MILE DESERT STORM 94D**  
 SIX MILE FALLING STAR 219Y

BAR-E-L NATURAL LAW 52Y  
**BAR-E-L ERICA 74A**  
 HF ERICA 339T

S TITLEST 1145  
 HF TIBBIE 93U  
 S A V HEAVY HITTER 6347  
 ROSE HILL DARK STAR 22P  
 S A V BISMARCK 5682  
 BAR-E-L MAGNOLIA 143K  
 PEAK DOT FAME 2N  
 HF ERICA 46P

CE	BW	WW	YW	MILK
6.0	2.6	52	94	23

Have a long look here. I love this female but it's no surprise because she is another Erica 74A x Six Mile Desert Storm. These full sisters are like peas in a pod and they are flat good. See an Erica... Buy an Erica. It's that simple.  
**AI Bred on May 13 to HF Entertainer 54H. Exposed to Merit Whiskey 8010F from May 31-July 29. Favorable to Pasture due mid March.**  
 OFFERED BY BLAIRS.AG CATTLE COMPANY



12

### BLAIR'S ERICA 612H

BBC 612H 06/03/2020 2193752

BAR-H CROSSFIRE 63A  
**SIX MILE DESERT STORM 94D**  
 SIX MILE FALLING STAR 219Y

BAR-E-L NATURAL LAW 52Y  
**BAR-E-L ERICA 74A**  
 HF ERICA 339T

S TITLEST 1145  
 HF TIBBIE 93U  
 S A V HEAVY HITTER 6347  
 ROSE HILL DARK STAR 22P  
 S A V BISMARCK 5682  
 BAR-E-L MAGNOLIA 143K  
 PEAK DOT FAME 2N  
 HF ERICA 46P

CE	BW	WW	YW	MILK
6.0	2.6	52	94	23

Wait till you see this Erica 74A daughter in person. She was the pick of Sara Archdekin when they were here. These full sisters will be hard to sort through but the good part is that there are no wrong answers. I can't wait to see these Erica x Desert Storm daughters milking.  
**AI Bred on May 13 to HF Entertainer 54H. Exposed to Merit Whiskey 8010F from May 31-July 29, 2021. Favorable to AI due late Feb..**  
 OFFERED BY BLAIRS.AG CATTLE COMPANY





*Lot 13*

# BLAIR'S ERICA 556H

OFFERED BY BLAIRS.AG CATTLE COMPANY

**13**

BBC 556H      28/02/2020      2173827

COLEMAN CHARLO 0256  
**COLEMAN BRAVO 6313**  
 COLEMAN DONNA 714

O C C PAXTON 730P  
 BOHI ABIGALE 6014  
 CONNEALY ONWARD  
 COLEMAN DONNA 386  
 S A V BISMARCK 5682  
 BAR-E-L MAGNOLIA 143K  
 PEAK DOT FAME 2N  
 HF ERICA 46P

BAR-E-L NATURAL LAW 52Y  
**BAR-E-L ERICA 74A**  
 HF ERICA 339T

Feature!! Erica 74A x Coleman Bravo daughter in a moderate package with the perfect attitude. She will impress you with how much rib shape she possesses and how efficient she is. She is definitely moderate made but there are a million ways to mate her that makes the hair stand up on your neck.

**AI Bred on May 13 to HF Entertainer 54H. Exposed to Merit Whiskey 8010F from May 31-July 29. Favorable to Pasture due late March.**

CE	BW	WW	YW	MILK
9.5	1.5	55	96	25



Blair's Erica 267F is a full sister to BBC 265F and is one of three full sisters selling. When you see these heifers in person it will be very difficult to tell 265F and 267F apart and it will be easy to understand why Erica 74A genetics are in such hot demand.

**AI Bred on May13 to Mc Cumber Tribute 702. Exposed to Flueury Bardolene 82G from May 26-July 29.**

**Favorable to AI due late**

**February**

OFFERED BY BLAIRS.AG CATTLE COMPANY



14

**BLAIR'S ERICA 267F**

BBC 267F      22/02/2018      2040674

DUFF DISTINCTION 9105  
**DUFF NAPOLEON 232**  
 DUFF EUR 443 MERLE 808

BAR-E-L NATURAL LAW 52Y  
**BAR-E-L ERICA 74A**  
 HF ERICA 339T

DUFF BASIC INSTINCT 6501  
 DUFF NL B351 LADY POP 619  
 DUFF NEW EDITION 6108  
 DCC NL 652K MERLE 443  
 S A V BISMARCK 5682  
 BAR-E-L MAGNOLIA 143K  
 PEAK DOT FAME 2N  
 HF ERICA 46P

CE	BW	WW	YW	MILK
7.0	2.0	48	75	15

15

**BLAIR'S ERICA 595F**

BBC 595F      06/03/2018      2158525

DUFF DISTINCTION 9105  
**DUFF NAPOLEON 232**  
 DUFF EUR 443 MERLE 808

BAR-E-L NATURAL LAW 52Y  
**BAR-E-L ERICA 74A**  
 HF ERICA 339T

DUFF BASIC INSTINCT 6501  
 DUFF NL B351 LADY POP 619  
 DUFF NEW EDITION 6108  
 DCC NL 652K MERLE 443  
 S A V BISMARCK 5682  
 BAR-E-L MAGNOLIA 143K  
 PEAK DOT FAME 2N  
 HF ERICA 46P

CE	BW	WW	YW	MILK
9.0	1.5	51	79	19

Pay attention here. There are (3) Erica x Duff Napoleon daughters selling and this one has a top McCumber Tribute son in our bull pen for the 2023 sale. She is a little short in the ear department but I think she is one to mark high in your catalog. You will admire the tremendous extension through her front 1/3. Add Blair's Erica 595F to your program.

**AI Bred on May13 to McCumber Tribute. Exposed to Flueury Bardolene 82G from May 26-July 29.**

**Favorable to AI due late**

**February**

OFFERED BY BLAIRS.AG CATTLE COMPANY





# BLAIR'S ECHO 528J

OFFERED BY BLAIRS.AG CATTLE COMPANY

16

BBC 528J      26/02/2021      2201395

COLEMAN CHARLO 0256  
**COLEMAN BRAVO 6313**  
 COLEMAN DONNA 714

O C C PAXTON 730P  
 BOHI ABIGALE 6014  
 CONNEALY ONWARD  
 COLEMAN DONNA 386  
 S A V BISMARCK 5682  
 BAR-E-L MAGNOLIA 143K  
 HF EL TIGRE 28U  
 HF ECHO 207N

BAR-E-L NATURAL LAW 52Y  
**PM ECHO 8'16**  
 HF ECHO 111Y

CE	BW	WW	YW	MILK
11.0	-0.9	46	88	27

Blair's Echo 528J is a direct daughter of the 2018 RBC Supreme Champion PM Echo 8'16. The mating with Coleman Bravo only produced this one heifer but our bull pen has (4) full sibs that will highlight our 2023 Pursuit of Excellence bull sale. Make a special note on this one.



Pm Echo 8'16- Dam



# KOYLE ECHO 104

OFFERED BY KOYLE FARMS

17

## KOYLE ECHO 104

MDKP 4J      02/01/2021      2221207

S A V PRESIDENT 6847	COLEMAN CHARLO 0256
<b>S A V AMERICA 8018</b>	S A V BLACKCAP MAY 4136
S A V MADAME PRIDE 0075	S A F 598 BANDO 5175
	S A V MADAME PRIDE 8264
	S A V BISMARCK 5682
BAR-E-L NATURAL LAW 52Y	BAR-E-L MAGNOLIA 143K
PM ECHO 8'16	HF EL TIGRE 28U
HF ECHO 111Y	HF ECHO 207N

CE	BW	WW	YW	MILK
3.0	3.6	63	111	25



Sav America 8018- Sire

Koyle ECHO 104 is a unique cross between the 2018 RBC Supreme Champion Female PM ECHO 8'16 and the \$1.51 million world record selling bull SAV America 8018. She is attractive, long bodied with extra bone and added size. Her maternal design matched with Natural Law on the bottom side, is sure to turn into a great production female down the road.



*Lot 18*

# BLAIR'S BELLA 551H

OFFERED BY BLAIRS.AG CATTLE COMPANY

**18**

## BLAIR'S BELLA 551H

BBC 551H      28/02/2020      2162723

BAR-H CROSSFIRE 63A  
**SIX MILE DESERT STORM 94D**  
 SIX MILE FALLING STAR 219Y

S TITLEST 1145  
 HF TIBBIE 93U  
 S A V HEAVY HITTER 6347  
 ROSE HILL DARK STAR 22P  
 DUFF - RF 2927  
 DUFF GEORGINA 9541 201  
 S A V RESOURCE 1441  
 DOUBLE AA BELLA 31'05

DUFF HOMETOWN 1546  
**BLAIR'S BELLA**  
 BLAIR'S BELLA 790B

Definitely a favorite in the bred heifer group. A Six Mile Desert Storm daughter that checks all the boxes and has a sister and her dam selling as Lots 19 and 19A. A heifer we would have normally showed if we hadn't committed to only showing a select group of heifer calves this fall. You will be impressed. **AI Bred on May 13, 2021 to HF Entertainer 54H. Exposed to Merit Whiskey 8010F from May 31-July 29, 2021. Favorable to Pasture due early March.**

CE	BW	WW	YW	MILK
6.0	1.9	40	79	17

Take a moment here as you won't want to miss this female if you like them moderate made & efficient. This Duff Hometown 1546 daughter is really doing a great job for us and has two daughters in the sale, Lot 18 & 19A.

**AI Bred on May 13, 2021 to Blair's Rocco 268F. Exposed to Merit Whiskey 8010F from May 31-July 29, 2021. Favorable to AI late February.**

OFFERED BY BLAIRS.AG CATTLE COMPANY



**19**

**BLAIR'S BELLA 343F**

BBC 10/04/2018 2162721

DUFF - RF 2927  
**DUFF HOMETOWN 1546**  
 DUFF GEORGINA 9541 201

S A V RESOURCE 1441  
**BLAIR'S BELLA 790B**  
 DOUBLE AA BELLA 31'05

O C C MISSING LINK 830M  
 RUDOW'S EMPRESS 927  
 DUFF LINEBRED 904  
 DUFF GEORGINA 4115 9541  
 RITO 707 OF IDEAL 3407 7075  
 S A V BLACKCAP MAY 4136  
 DOUBLE AA BLACKMAN 292'01  
 DOUBLE AA BELLA 206'02

CE	BW	WW	YW	MILK
3.0	2.5	46	79	16

**19A**

**BLAIR'S BELLA 538J**

BBC 538J 27/02/2021 2199640

COLEMAN CHARLO 0256  
**BLAIR'S MARTIAL LAW 593E**  
 BAR-E-L ERICA 74A

DUFF HOMETOWN 1546  
**BLAIR'S BELLA**  
 BLAIR'S BELLA 790B

O C C PAXTON 730P  
 BOHI ABIGALE 6014  
 BAR-E-L NATURAL LAW 52Y  
 HF ERICA 339T  
 DUFF - RF 2927  
 DUFF GEORGINA 9541 201  
 S A V RESOURCE 1441  
 DOUBLE AA BELLA 31'05

CE	BW	WW	YW	MILK
9.0	0.4	49	82	23

Bella 538J is at the top of my list and comes in a moderate package with tremendous dimension. Note the Erica 74A in pedigree on the bottom side. Blair's Martial 593E was the sire of the high selling heifer in last years sale and went to SSS and Sunberry Valley. Blair's Martial Law 593E is currently working at Duff Cattle Co in Oklahoma.  
 OFFERED BY BLAIRS.AG CATTLE COMPANY



Martial Law 593E-Sire



*Lot 19A*

## *The Argentina Story*

After the great success and receptivity of the first calf crop of Argentina's Angus genetics by Canadian and American breeders, we are presenting the second chapter of this amazing story.

We are confident that this new group of females represents the Argentina's way of breeding cattle.

The tradition and reputation of generations of breeding cattle that "balance" productivity with efficiency and eye appeal is a Firebrand for Argentina's breeders.

Balance, breed quality, Adaptability, soundness, functionality, fertility, broody phenotype and beef quality had been a must in their breeding programs for decades. Carlos Ojea is considered one of the most influential and top breeders in the history of the country.

Carlos selected embryos from really top end donor cows and mated them to the most influential bulls in Argentina today.

Opportunity will Knock on December .... When you will have the chance to buy top end females from the famous and productive 2408, 436 , 182 ,236, 00331 and the popular sisters 2204 and 2206. Take special note on Blair's 2408 Sarita 547J as she will play a critical role in the path forward for Argentine genetics in North America.

*Kevin Blair*





*Lot 20*

# BLAIR'S 2408 SARITA 547J

OFFERED BY BLAIRS.AG CATTLE COMPANY

**20**

BBC 547J      06/03/2021      2237995

TRES MARIAS 6301 ZORZAL  
**COSENZA FACONERA SANF ZORZAL 338**  
 COSENZA FACONERA SANF 39

TRES MARIAS 5887 HORNERO  
 TRES MARIAS 4850 WIND EXT  
**SANFER PERFORMA 941**  
 SANFER VENTA J24 PER 1072  
 O C C DISCOVERY 918D

STRATUM 1333 CREDITO DISCOVERY  
**LAFE 2408 SARITA CREDITO-FIV-**  
 LAFE 940 MILLIE

BLACK PRINCESS 7480 PULY  
 S A V 004 DENSITY 4336  
 RUBETA 3749 NAZARENA

CE	BW	WW	YW	MILK
----	----	----	----	------



**Sale Feature - Donor Alert**

The dam to Blair's 547J is a new generation donor female in Argentina with a very powerful pedigree. The dam to 2408 Sarita was Reserve Champion female at Palermo and was one of the most powerful females to ever show at Palermo. The sire to Blair's 2408 Sarita is considered the #1 sire for female production in Argentina.

**We are retaining 50% embryo interest with possession negotiable. Entered at CWA**





**21**

**BLAIR'S 182 PAYADORA 526J**

BBC 526J      25/02/2021      2237994

BENJAMIN 1547 ZORZAL LIDER  
**ERRE TE 383 CONDOR EURO**  
 ERRE TE 27 GRINGA TOLUCA

TRES MARIAS 6301 ZORZAL  
 LA LEGUA LIDER 8174 BELLE  
**RUBETA 3910 GRINGO**  
 ERRE TE 3241 EXCRIBANA BROMISTA  
 DON JOSE 176 MAXI

TRES MARIAS 8155 CANDELERO  
**LA JUANITA PAYADORA 182 T/E**  
 MERCACHIFLE MARIPOSE -T/E

TRES MARIAS 7358 LA ANDRIA  
 TRES MARIAS 6301 ZORZAL  
 TRES MARIAS 7052 PAYADOR 5270 -T/E

CE      BW      WW      YW      MILK

**22**

**BLAIR'S 182 PAYADORA 527J**

BBC 527J      25/02/2021      3974233

BENJAMIN 1547 ZORZAL LIDER  
**ERRE TE 383 CONDOR EURO**  
 ERRE TE 27 GRINGA TOLUCA

TRES MARIAS 6301 ZORZAL  
 LA LEGUA LIDER 8174 BELLE  
**RUBETA 3910 GRINGO**  
 ERRE TE 3241 EXCRIBANA BROMISTA  
 DON JOSE 176 MAXI

TRES MARIAS 8155 CANDELERO  
**LA JUANITA PAYADORA 182 T/E**  
 MERCACHIFLE MARIPOSE -T/E

TRES MARIAS 7358 LA ANDRIA  
 TRES MARIAS 6301 ZORZAL  
 TRES MARIAS 7052 PAYADOR 5270 -T/E

CE      BW      WW      YW      MILK

The Juanita Payadora 182 donor is out of the very popular Candelero and her dam has produced many champions. Check out these twins that are a result of a split embryo. You will admire the extension through their front 1/3 and the future looks very bright.  
 OFFERED BY BLAIRS.AG CATTLE COMPANY







# BLAIR'S 236 FORJANDORA 542J

OFFERED BY BLAIRS.AG CATTLE COMPANY

**23**

BBC 542J      28/02/2021      2238066

TRES MARIAS 6301 ZORZAL	TRES MARIAS 5887 HORNERO
COSENZA FACONERA SANF ZORZAL 338	TRES MARIAS 4850 WIND EXT
COSENZA FACONERA SANF 39	<b>SANFER PERFORMA 941</b>
	SANFER VENTA J24 PER 1072
BENJAMIN 1547 ZORZAL LIDER	TRES MARIAS 6301 ZORZAL
<b>LAJUANITA FORJANDORA 236 -T/E</b>	LA LEGUA LIDER 8174 BELLE
RUBETA 4780 ZORZALA	TRES MARIAS 6301 ZORZAL
	RUBETA 3749 NAZARENA

The dam to 236 Forjadora was the National Champion Female at Palermo. Forjadora 542J has the right tools with pedigree, phenotype, and presence and she has that great hair coat that Argentine genetics are known for.

CE	BW	WW	YW	MILK
----	----	----	----	------



Blair's Surena 412D - Maternal Sister to Lot 25 & Paternal Sister to Lots 20 & 23

Blair's Pantagonia 305H is off the 2204 Pantagonia donor who might be the most impressive female and comes from the family that produced the famous Zorzal. 2204 was Reserve champion at Palermo and produced this years junior champion bull at Palermo as well. Embryo's off 2204 command top dollar in Argentina.

**AI Bred on May 13, 2021 to HF Entertainer 54H. Exposed to Merit Whiskey 8010F from May 31-July 29, 2021. Favorable to Pasture early March.**  
OFFERED BY BLAIRS.AG CATTLE COMPANY

**24**

**BLAIR'S 2204 PATGONIA O305H**

BBC 305H      01/04/2020      2196091

BENJAMIN 1547 ZORZAL LIDER	TRES MARIAS 6301 ZORZAL
<b>ERRE TE 383 CONDOR EURO</b>	LA LEGUA LIDER 8174 BELLE
ERRE TE 27 GRINGA TOLUCA	RUBETA 3910 GRINGO
	ERRE TE 3241 EXCRIBANA BROMISTA
	O C C DISCOVERY 918D
STRATUM 1333 CREDITO DISCOVERY	BLACK PRINCESS 7480 PULY
<b>LAFE 2204 PATAGONIA CREDITO</b>	S A V 8180 TRAVELER 004
MERCACHIFLE LA CUBANA 004	TRES MARIAS 7376 HORNERO

CE	BW	WW	YW	MILK
----	----	----	----	------

**25**

**BLAIR'S 2206 SURENA O312H**

BBC 312H      04/04/2020      2196087

BENJAMIN 1547 ZORZAL LIDER	TRES MARIAS 6301 ZORZAL
<b>ERRE TE 383 CONDOR EURO</b>	LA LEGUA LIDER 8174 BELLE
ERRE TE 27 GRINGA TOLUCA	RUBETA 3910 GRINGO
	ERRE TE 3241 EXCRIBANA BROMISTA
	DON JOSE 176 MAXI
TRES MARIAS 8155 CANDELERO	TRES MARIAS 7358 LA ANDRIA
<b>LAFE 2206 SURENA CANDELERO</b>	S A V 004 DENSITY 4336
HYLINE SURENA 0421	SURENA 478 QUEEN EBONETTE XPL

CE	BW	WW	YW	MILK
----	----	----	----	------



*Lot 25*

Check out these paternal sisters and their presence. This cow family is responsible for producing the famous Argentina bull Zorzal. If you believe in cow families like we do, have a serious look at the credentials here.

Blair's Surena 412D (Maternal Sib) sold in 2017 CWA Power & Perfection sale \$34,000 to Kurt Hamburger, Weatherford OK **AI Bred on May 13 to HF Entertainer 54H. Exposed to Merit Whiskey 8010F from May 31-July 29. Favorable to AI due late February.**  
OFFERED BY BLAIRS.AG CATTLE COMPANY

The 436 female is one of the most powerful & prominent cows in Argentina. Many champions at Palermo trace back to this cow family. 436 produced a Reserve Champion At Palermo and currently has (5) daughters in embryo production.

**AI Bred on May 13 to HF Entertainer. Exposed to Merit Whiskey 8010F from May 31-July 29. Favorable to Pasture due late April.**

OFFERED BY BLAIRS.AG CATTLE COMPANY



Full Sib to Lot 26



**26**

**BLAIR'S 436 LASS 323H**

BBC 323H      06/04/2020      2205569

BENJAMIN 1547 ZORZAL LIDER  
**ERRE TE 383 CONDOR EURO**  
ERRE TE 27 GRINGA TOLUCA

S A V 8180 TRAVELER 004  
**ANQUOR 436 LASS**  
BLACK PRINCESS 10300 LASS

TRES MARIAS 6301 ZORZAL  
LA LEGUA LIDER 8174 BELLE  
RUBETA 3910 GRINGO  
ERRE TE 3241 EXCRIBANA BROMISTA  
SITZ TRAVELER 8180  
BOYD FOREVER LADY 8003  
NICHOLS PERFORMA D162  
BLACK PRINCESS 9470 LASS

CE      BW      WW      YW      MILK

**27**

**BLAIR'S 00331 PRINCESS 522J**

BBC 522J      23/02/2021      CM520548

BENJAMIN 1547 ZORZAL LIDER  
**ERRE TE 383 CONDOR EURO**  
ERRE TE 27 GRINGA TOLUCA

TRES MARIAS 6301 ZORZAL  
**HYLINE PRINCESS 00331 - T/E**  
BLACK PRINCESS 9454 LUCY 442-T/EI

TRES MARIAS 6301 ZORZAL  
LA LEGUA LIDER 8174 BELLE  
RUBETA 3910 GRINGO  
ERRE TE 3241 EXCRIBANA BROMISTA  
TRES MARIAS 5887 HORNERO  
TRES MARIAS 4850 WIND EXT  
D H D TRAVELER 6807  
HYLINE LUCY 442

CE      BW      WW      YW      MILK



OFFERED BY  
BLAIRS.AG CATTLE COMPANY



Blackbird 0256 - Dam

*Lot 28*

# BLAIR'S BLACKBIRD 316F

OFFERED BY BLAIRS.AG CATTLE COMPANY

**28**

BBC 316F      04/04/2018      2070360

O C C PAXTON 730P  
**COLEMAN CHARLO 0256**  
 BOHI ABIGALE 6014

O C C FOCUS 813F  
 O C C BLACKBIRD 736K  
 SITZ TRAVELER 8180  
 S A V ABIGALE 6062  
 DUFF NEW ATTRACTION 6110  
 DUFF E BLAST 8138  
**DUFF EB 692 BLACKBIRD 0256**  
 DUFF NL 1T2 BLACKBIRD 692

DUFF EMB814G DIXIE ERICA 624  
 DCC NEW LOOK 101  
 R T R BLACKBIRD 1T2

CE	BW	WW	YW	MILK
7.0	0.9	45	77	23

Moderate made, efficient made genetics here. A combination of the Duff Blackbird 0256 donor and the highly sought after Coleman Charlo. Expect to mark her high in your catalog on sale day and to have fellow breeders fall in love when they see walking your pastures.  
**AI Bred on May 2, 2021 to McCumber Tribute 702. Exposed to Flueury Bardolene 82G from May 26-July 29, 2021. Favorable to Pasture due mid March.**

**29**

**BLAIR'S SUSAN 696F**

BBC 696F      25/03/2018      2028416

S A V FINAL ANSWER 0035  
**OSU FINAL EXAM 3139**  
 OSU EMPRESS 1105

SITZ TRAVELER 8180  
 S A V EMULOUS 8145  
 S A V BRILLIANCE 8077  
 OSU EMPRESS 8175  
 O C C GENESIS 872G  
 O C C DIXIE ERICA 814G  
 CARRUTHERS 598 29L  
 CARRUTHERS SUSAN 17P

DUFF NEW GENERATION 6107  
**BLAIRS SUSAN 302Y**  
 CARRUTHERS SUSAN 53S

CE	BW	WW	YW	MILK
7.0	1.1	46	84	11

Take note of the OSU Final Exam 3139 in this pedigree. We purchased Final Exam out of the stall at Denver to add maternal traits and calving ease and he did an excellent job of both. We have sold many bulls to happy commercial customers and females to many breeders who routinely call about the success they have had. If you want them soft made, Final Exam does it every time. Please note we are selling a limited amount of OSU Final Exam 3139 semen in the semen section.  
**AI Bred on May 13, 2021 to Blair's Rocco 268F Exposed to Flueury Bardolene 82G from May 26-July 29, 2021. Favorable to Pasture due early March.**  
 OFFERED BY BLAIRS.AG CATTLE COMPANY



# BLAIR'S GEORGINA 583F

OFFERED BY BLAIRS.AG CATTLE COMPANY

**30**

BBC 583F      05/03/2018      2032812

O C C PAXTON 730P  
**COLEMAN CHARLO 0256**  
 BOHI ABIGALE 6014

O C C FOCUS 813  
 O C C BLACKBIRD 736K  
 SITZ TRAVELER 8180  
 S A V ABIGALE 6062  
 S A V FINAL ANSWER 0035  
 VIN-MAR EDELLA 2827  
 DUFF ENCORE 702  
 WK GEORGINA 9375

VIN-MAR O'REILLY FACTOR  
**WCR GEORGINA 5005C**  
 ZWT GEORGINA 9026

Grab hold of an opportunity to add a Georgina female from the family that was extremely popular in last years sale. The Georgina 5005C dam and Georgina 537E sister both sold to MWC investments and were sale highlights. This is a family that flat out works.

**AI Bred on May 13 to Blair's Rocco Exposed to Flueury Bardolene 82G from May 26-July 29. Favorable to Pasture due early March.**

OFFERED BY BLAIRS.AG CATTLE COMPANY

CE	BW	WW	YW	MILK
7.0	1.4	50	93	25

**31**

## DWAJO ZARA 45F

DJE 45F      30/01/2018      2042809

VISION UNANIMOUS 1418  
**NORTHERN VIEW GRAND SLAM 107D**  
 NORTHERN VIEW PRINCESS 103A

VISIONTOPLINE ROYAL STOCKMAN  
 VISION EDELLA 665  
 CONNEALY THUNDER  
 NORTHERN VIEW PRINCESS 73U  
 CUDLOBE IN FOCUS 5S  
 CUDLOBE EXQUISITE LADY 69Y  
 DWAJO DUTCH 65' 68S  
 DWAJO ZARA 94K

CUDLOBE TOTAL FOCUS 6A  
**DWAJO ZARA 11D**  
 DWAJO ZARA 5A

CE	BW	WW	YW	MILK
1.0	3.1	58	105	14

A female we purchased from Dwajo Angus to add the Vision Unanimous influence. Her Blair's Martial Law 593E daughter sells.

**AI Bred on May 13, 2021 to Blair's Rocco 268F. Exposed to Flueury Bardolene 82G from May 26-July 29, 2021. Favorable to AI due late February.**

OFFERED BY BLAIRS.AG CATTLE COMPANY

**31A**

## BLAIR'S ZARA 517J

BBC 517J      22/02/2021      2195999

COLEMAN CHARLO 0256  
**BLAIR'S MARTIAL LAW 593E**  
 BAR-E-L ERICA 74A

O C C PAXTON 730P  
 BOHI ABIGALE 6014  
 BAR-E-L NATURAL LAW 52Y  
 HF ERICA 339T  
 VISION UNANIMOUS 1418  
 NORTHERN VIEW PRINCESS 103A  
 CUDLOBE TOTAL FOCUS 6A  
 DWAJO ZARA 5A

NORTHERN VIEW GRAND SLAM 107D  
**DWAJO ZARA 45F**  
 DWAJO ZARA 11D

CE	BW	WW	YW	MILK
4.0	2.6	58	101	22

Take special note of Erica 74A on the top side of this pedigree.  
 OFFERED BY BLAIRS.AG CATTLE COMPANY



*Lot 32*

# BLAIR'S PRIDE 306H

OFFERED BY BLAIRS.AG CATTLE COMPANY

**32**

BBC 306H      02/04/2020      2177141

DUFF DISTINCTION 9105  
**DUFF NAPOLEON 232**  
 DUFF EUR 443 MERLE 808

DUFF BASIC INSTINCT 6501  
 DUFF NL B351 LADY POP 619  
 DUFF NEW EDITION 6108  
 DCC NL 652K MERLE 443  
 S A V 8180 TRAVELER 004  
 S A V MAY 7238  
 S A F 598 BANDO 5175  
 S A V MADAME PRIDE 8264

S A V 004 DENSITY 4336  
**S A V MADAME PRIDE 0151**  
 S A V MADAME PRIDE 0075

CE	BW	WW	YW	MILK
7.0	1.8	53	85	18

Pay attention here as this is a Duff Napoleon off the dam to SAV Renovation. Renovation has put the Angus breed on notice at both SAV & Brooking Angus. She is moderate in her type with a proven pedigree. Paternal sib Blair's External Law is working at Duff Cattle Company in Oklahoma. Stand up and be noticed after the drop of the gavel on this one.

**AI Bred on May 13, 2021 to HF Entertainer 54H. Exposed to Merit Whiskey 8010F from May 31-July 29, 2021. Favorable to Pasture due early April, 2022.**  
 OFFERED BY BLAIRS.AG CATTLE COMPANY



Madame Pride 0151 - Dam



S A V Renovation - Maternal Brother



Paternal sister to Lot 33A and feature heifer calf from 2020 Opportunity Knocks sale  
Owned with SSS Red Angus & Sunberry Valley

**33**

**BLAIR'S OAKLEAF 620F**

BBC 620F      09/03/2018      2028309

BAR-H CROSSFIRE 63A  
**SIX MILE DESERT STORM 94D**  
 SIX MILE FALLING STAR 219Y  
 DUNLOUISE CORTACHY BOY D137  
**LOOKOUT OAKLEAF 5W**  
 LOOKOUT OAKLEAF 112T

S TITLEST 1145  
 HF TIBBIE 93U  
 S A V HEAVY HITTER 6347  
 ROSE HILL DARK STAR 22  
 ASHLEY EULAR  
 CHAMPAGNE CHERRY BEE B117  
 LOOKOUT PACESETTER 258M  
 LOOKOUT OAKLEAF 102L

CE	BW	WW	YW	MILK
3.0	1.0	34	58	8

The Oakleaf 5W female has been very popular around the ranch as every year she brings in a good one. This Six Mile Desert Storm daughter has tons of Angus look and extension and should have longevity built in.

**AI Bred on May 13, 2021 to Blair's Rocco 268F. Exposed to Flueury Bardolene 82G from May 26-July 29, 2021. Favorable to AI due late February, 2022.**  
OFFERED BY BLAIRS.AG CATTLE COMPANY

**33A**

**BLAIR'S OAKLEAF 540J**

BBC 540J      28/02/2021      2196012

COLEMAN CHARLO 0256  
**BLAIR'S MARTIAL LAW 593E**  
 BAR-E-L ERICA 74A  
 SIX MILE DESERT STORM 94D  
**BLAIR'S OAKLEAF 620F**  
 LOOKOUT OAKLEAF 5W

O C C PAXTON 730P  
 BOHI ABIGALE 6014  
 BAR-E-L NATURAL LAW 52Y  
 HF ERICA 339T  
 BAR-H CROSSFIRE 63A  
 SIX MILE FALLING STAR 219Y  
 DUNLOUISE CORTACHY BOY D137  
 LOOKOUT OAKLEAF 112T

CE	BW	WW	YW	MILK
5.0	1.5	46	78	19

Longevity from Oakleaf 5W and predictability from Erica 74A. 'Nuff said.  
Maternal Sib to 524H  
OFFERED BY BLAIRS.AG CATTLE COMPANY

**34**

**BLAIR'S OAKLEAF 524H**

BBC 524H      25/02/2020      2146548

COLEMAN CHARLO 0256  
**COLEMAN BRAVO 6313**  
 COLEMAN DONNA 714  
 SIX MILE DESERT STORM 94D  
**BLAIR'S OAKLEAF 620F**  
 LOOKOUT OAKLEAF 5W

O C C PAXTON 730P  
 BOHI ABIGALE 6014  
 CONNEALY ONWARD  
 COLEMAN DONNA 386  
 BAR-H CROSSFIRE 63A  
 SIX MILE FALLING STAR 219Y  
 DUNLOUISE CORTACHY BOY D137  
 LOOKOUT OAKLEAF 112T

CE	BW	WW	YW	MILK
10.0	0.2	38	71	16

Coleman Bravo continues to produce an efficient type that can handle adverse climates and you can expect the same from Blair's Oakleaf 524H.  
Maternal Sib to 540J

**AI Bred on May 13, 2021 to HF Entertainer 54H. Exposed to Merit Whiskey 8010F from May 31-July 29, 2021. Favorable to AI due late February, 2022.**  
OFFERED BY BLAIRS.AG CATTLE COMPANY



An own daughter of RAB Final Answer 4955W (Aka MegaLass) deserves your time. MegaLass was a donor with so much rib and hip shape that she couldn't fit down a chute system. She was powerful, had a great udder and excellent temperament. This PM Thunderstruck daughter looks to be following in her dams footsteps.  
**AI Bred on May 13, 2021 to Blair's Rocco 268F. Exposed to Flueury Bardolene 82G from May 26-July 29, 2021. Favorable to Pasture late April.**  
 OFFERED BY BLAIRS.AG CATTLE COMPANY

*Lot 35*

**35**

**BLAIR'S MEGALASS 815F**

BBC 815F      06/03/2018      2105284

CE	BW	WW	YW	MILK
1.0	3.8	54	93	17

HF THUNDERBIRD 146Y  
**PM THUNDERSTRUCK 22'13**  
 MVF ROSEBUD 313U  
  
 S A V FINAL ANSWER 0035  
**RAB MS FINAL ANSWER 4955W**  
 RAB MS PREDESTINED 4826T

**36**

**BLAIR'S MEGALASS 1910F**

BBC 1910F      04/03/2018      2158556

CE	BW	WW	YW	MILK
1.0	3.8	54	93	17

HF TIGER 5T  
 HF ECHO 187N  
 WESTERN WIDESPREAD 1L  
 MVF ROSEBUD 906N  
 SITZ TRAVELER 8180  
 S A V EMULOUS 8145  
 G A R PREDESTINED  
 RAB MS DIRECTION 4955N



MegaLass 4955W is a powerhouse donor and this PM Thunderstruck 22'13 daughter will add frame and performance both.  
**Exposed to Flueury Bardolene 82G from May 31-July 29, 2021. Due late March.**  
 OFFERED BY BLAIRS.AG CATTLE COMPANY

MEGALASS 4955W - DAM TO LOT 35 & 36



37

### BLAIR'S FINAL ATTRACTION 617F

BBC 617F      19/03/2018      2059750

SWITZ MONARCH 7R  
**WIWA CREEK MONARCH 53'08**  
WIWA CREEK ERICA 81'06

SHARP MONARCH 56M  
WIWA CREEK TINA 26D 7'9  
SAR STOCKMAN 84L  
THOMASON ERICA 45J  
O C C GENESIS 872G  
O C C DIXIE ERICA 814G  
DOUBLE AA BLACKMAN 292'01  
DOUBLE AA BELLA 206'02

DUFF NEW ATTRACTION 6110  
**NLC FATAL ATTRACTION 1W**  
DOUBLE AA BELLA 31'05

CE	BW	WW	YW	MILK
3.0	2.8	34	49	23

Wiwa Creek Monarch is a bull everyone should be using. This Monarch x Fatal Attraction female will add length and shape to your calf crop.

**AI Bred on May 13, 2021 to Blair's Rocco 268F. Exposed to Flueury Bardolene 82G from May 26-July 29, 2021. Favorable to AI due late February.**

OFFERED BY BLAIRS.AG CATTLE COMPANY



38

### BLAIR'S MEGALASS 576F

BBC 576F      03/03/2018      2059754

SWITZ MONARCH 7R  
**WIWA CREEK MONARCH 53'08**  
WIWA CREEK ERICA 81'06

SHARP MONARCH 56M  
WIWA CREEK TINA 26D 7'9  
SAR STOCKMAN 84L  
THOMASON ERICA 45J  
O C C PAXTON 730P  
BOHI ABIGALE 6014  
S A V FINAL ANSWER 0035  
RAB MS PREDESTINED 4826T

COLEMAN CHARLO 0256  
**BLAIR'S FINAL ANSWER 604C**  
RAB MS FINAL ANSWER 4955W

CE	BW	WW	YW	MILK
8.0	3.7	41	71	19

This pedigree reads like royalty and she looks the part as well. The 604C dam sold in last years sale to Anchorage for \$7000.

**AI Bred on May 13, 2021 to Blair's Rocco. Exposed to Flueury Bardolene 82G from May 26-July 29, 2021. Favorable to AI due late February.**

OFFERED BY BLAIRS.AG CATTLE COMPANY



BLAIR'S FINAL ANSWER 604C - DAM TO LOT 38

39

### BLAIR'S MEGALASS 701F

BBC 701F      26/03/2018      2056930

SOO LINE MOTIVE 9016  
**SOO LINE LOCOMOTIVE 1403**  
SHADY BROOK EVERENTENSE 2039

HF KODIAK 5R  
TLA BEAUTY 5R  
S A V FINAL ANSWER 0035  
SCR EVERELDA ENTENSE 748  
RITO 707 OF IDEAL 3407 7075  
S A V BLACKCAP MAY 4136  
S A V FINAL ANSWER 0035  
RAB MS PREDESTINED 4826T

S A V RESOURCE 1441  
**BLAIR'S MEGALASS 743C**  
RAB MS FINAL ANSWER 4955W

CE	BW	WW	YW	MILK
7.0	0.9	45	87	20

I love this pedigree as it brings together Soo Line Locomotive, SAV Resource and SAV Final Answer. The Blair's Megalass 743C dam was a highlight in last years sale and sold to Mike Schmidt.

**AI Bred on May 13, 2021 to Blair's Rocco. Exposed to Flueury Bardolene 82G from May 26-July 29, 2021. Favorable to AI due late February.**

OFFERED BY BLAIRS.AG CATTLE COMPANY



BLAIR'S MEGALASS 743C - DAM TO LOT 39



AI Bred on May 13, 2021 to HF Entertainer 54H. Exposed to Merit Whiskey 8010F from May 31-July 29, 2021. Favorable to AI late February.



BBC 80E - Maternal Sib to Lots 40 & 41

**40**

**BLAIR'S RACHEL DL 416H**

BBC 416H 16/03/2020 2192787

S A V INTERNATIONAL 2020  
**S A V NATIONAL ANTHEM 5740**  
 A C DUKE GIRL 57

S A V HARVESTOR 0338  
 S A V EMBLYNETTE 5483  
 CAR TRACKER 305  
 A C DUKE GIRL 330  
 DCC NEW LOOK 101  
 C R C C MISS MIRANDA 412P  
 DUFF NEW EDITION 6108  
 HOFF RACHEL S C 4256 1334

CE	BW	WW	YW	MILK
2.5	2.7	51	88	28

**41**

**BLAIR'S RACHEL DL 429H**

BBC 429H 23/03/2020 2193772

S A V INTERNATIONAL 2020  
**S A V NATIONAL ANTHEM 5740**  
 A C DUKE GIRL 57

S A V HARVESTOR 0338  
 S A V EMBLYNETTE 5483  
 CAR TRACKER 305  
 A C DUKE GIRL 330  
 DCC NEW LOOK 101  
 C R C C MISS MIRANDA 412P  
 DUFF NEW EDITION 6108  
 HOFF RACHEL S C 4256 1334

CE	BW	WW	YW	MILK
2.5	2.7	51	88	28

It's always nice to be able to evaluate full sisters and this pair will suit your fancy. They come off a flush we purchased from Darren Schrag on the DLS Rachel 186 donor and we mated with SAV National Anthem 5740. The full sisters are paternal sibs to the high selling bred heifer in last years Opportunity Knocks sale. Pick one or pick them both as a welcome addition to your program.  
 OFFERED BY BLAIRS.AG CATTLE COMPANY



AI Bred on May 13, 2021 to HF Entertainer 54H. Exposed to Merit Whiskey 8010F from May 31-July 29, 2021. Favorable to AI late February.



National Anthem 5740  
 Sire of Lots 40 & 41



# WILBAR ANNIE K 838H

OFFERED BY WILBAR CATTLE CO

42

WJD 838H	04/02/2020	2148285
CONNEALY COMPLETE 8454		SUMMITCREST COMPLETE 1P55
SIX MILE CHALLENGER 417C		BLACK BEARA OF CONANGA 8454
SIX MILE QUEEN MOTHER 849U		BOYD NEW DAY 8005
		WWF F KRUGER QUEEN MOTHER 114P
DMM TRADE SECRET 36X		GUMBO GULCH CREED 94S
<b>WILBAR ANNIE K 274A</b>		SOUTHERN OX BLACKBIRD 12J
WILBAR ANNIE K 112W		WILBAR TIMEX 660T
		VALLEY BLOSSOM ANNIE K 743S



Wilbar Annie K 274A - Dam

CE	BW	WW	YW	MILK
1.0	2.5	33	47	26

If powerful, big bodied cows is what you are searching for then have a close look at Annie K 838H. When you stand behind this heifer you can't help but notice the barrel rib shape she has. Her dam is a gorgeous uddered Trade Secret daughter that has the same rib and base width as she does. The Challenger daughters have been very productive females so far, raising both feature sons and daughters. The AI service sire is an exciting Connealy Payraise son. He offers double digit calving ease but still ranks in the top 1% of the breed for WW and YW. The exposure sire is the recent Grand Champion bull from Lloydminster Stockade Roundup, Reserve Grand Champion from FarmFair and Top 5 Alberta Supreme finalist. The pregnancy was too close to call between the AI & the exposure, but either way, you're going to have a unique and exciting calf on the ground.



Greenlight- Service Sire

AI'd April 18, 2021 to Crawford Guarantee 9137  
Exposed April 24 to May 31, 2021 to Wilbar Greenlight 839H



*Lot 43*

# BLAIRSWEST GRACE 18H

OFFERED BY BLAIRSWEST LAND & CATTLE

This super stout easy doing grace bred heifer is one that we don't think should get looked over. This one has some endless lineage of maternal power. Grace 169B sold for 37,500 for 3/4 interest in 2021 to Beaman X6 Ranch in Colorado and DBA Bounty Farms. This stunner daughter that is carrying a safe service to Coleman Bravo is very exciting and don't think you'll want this one to slip through the cracks. Parent Verified **AI'd to Coleman Bravo 6313 on April 8, 2021 (favourable).** Exposed May 10 - May 30, 2021 to Merit Whiskey 8010



Young Dale Grace 169B - Dam

**43**

MJNB 18H	28/01/2020	2237879		
LD CAPITALIST 316		CONNEALY CAPITALIST 028		
<b>MUSGRAVE 316 STUNNER</b>		LD DIXIE ERICA 2053		
MCATL BLACKBIRD 831-1378		MCATL PURE PRODUCT 903-55		
		MCATL BLACKBIRD 1378-573		
		HOOVER DAM		
PF HOOVER DAM 041		P F QUEEN MOTHER 446		
<b>YOUNG DALE GRACE 169B</b>		YOUNG DALE PANARAMA 66T		
YOUNG DALE GRACE 107W		YOUNG DALE GRACE 14P		
CE	BW	WW	YW	MILK
7.5	-0.2	51	89	29

I love the way this pedigree lines up with SAV International 2020 & Soo Line Motive 9016 with a tick of SAV Net Worth. Lots of reasons to add Blair's Lass 629F to the trailer headed your way.

**AI Bred on May 13, 2021 to Blair's Rocco Exposed to Flueury Bardolene 82G from May 26-July 29, 2021. Favorable to AI due late February.**

OFFERED BY BLAIRS.AG CATTLE COMPANY



44

### BLAIR'S LASS 629F

BBC 629F 10/03/2018 2028370

S A V INTERNATIONAL 2020  
**S A V NATIONAL ANTHEM 5740**  
 A C DUKE GIRL 57

SOO LINE MOTIVE 9016  
**NORDAL 468Z LASS 668C**  
 NORDAL 368W LASS 468Z

S A V HARVESTOR 0338  
 S A V EMBLYNETTE 5483  
 CAR TRACKER 305  
 A C DUKE GIRL 330  
 HF KODIAK 5R  
 TLA BEAUTY 5R  
 LOCUST GROVE NET WORTH 17U  
 NORDAL 368S BLACK LASS 368W

CE	BW	WW	YW	MILK
1.0	2.3	49	85	27

45

### BLAIR'S INSTINCT 428H

BBC 428H 22/03/2020 2192823

S A V INTERNATIONAL 2020  
**S A V NATIONAL ANTHEM 5740**  
 A C DUKE GIRL 57

DUFF BASIC INSTINCT 6501  
**RSKY 6540 MS INSTINCT 0065**  
 RSKY 0108 MS MAGICIAN 6540

S A V HARVESTOR 0338  
 S A V EMBLYNETTE 5483  
 CAR TRACKER 305  
 A C DUKE GIRL 330  
 O C C MISSING LINK 830M  
 O C C DIXIE ERICA 814G  
 O C C MAGICIAN 888M  
 JAUER ANCHOR 3002 0108

CE	BW	WW	YW	MILK
0.5	2.9	48	83	26

You will appreciate the balance, performance & overall look in Blair's Instinct 428H. The Instinct 0065 donor is co-owned with Canadian Donors and has proven herself over and over to be a breed leader. SAV National Anthem 5740 has left a great set of females for us and a National Anthem daughter is now a donor for SAV & Hollinger Land & Cattle/CSI Angus.

**AI Bred on May 13, 2021 to HF Entertainer 54H. Exposed to Merit Whiskey 8010F from May 31-July 29, 2021. Favorable to AI due late February.**

OFFERED BY BLAIRS.AG CATTLE COMPANY

46

### BLAIR'S ERICA 693H

BBC 693H 07/04/2020 2146205

S A V INTERNATIONAL 2020  
**S A V NATIONAL ANTHEM 5740**  
 A C DUKE GIRL 57

HF EXCLUSIVE 153X  
**BLAIR'S ERICA 531A**  
 ERICA OF CHALCO 18X

S A V HARVESTOR 0338  
 S A V EMBLYNETTE 5483  
 CAR TRACKER 305  
 A C DUKE GIRL 330  
 SOUTHLAND EXCLUSIVE 62U  
 WILBAR RUBY 955N  
 HF KODIAK 214T  
 ERICA OF RANNOCH 100J

CE	BW	WW	YW	MILK
-2.0	3.5	41	75	26

Another SAV National Anthem daughter off a very nice HF Exclusive daughter now working at Sortland's. The AC Duke Girl 57 on the top side of the pedigree is a popular donor at SAV.

**AI Bred on May 13, 2021 to HF Entertainer. Exposed to Merit Whiskey 8010F from May 31-July 29, 2021. Favorable to AI due late February.**

OFFERED BY BLAIRS.AG CATTLE COMPANY



National Anthem 5740 - Sire of Lots 44, 45 & 46



Executive Decision 5'17 - Sire

*Lot 47*

Lucy is the first daughter of Executive Decision to be offered here. A few years ago, we swept the ring at a long dollar to own all of the available semen on what we felt to be the complete package in a breeding bull. Executive Decision has made a big splash at W Sunrise, Poplar Meadows and our place. Everblack chose Wilbar Executive Order 835H as our \$20,000 high seller this spring. The milking daughters we have are highly productive with excellent foot & udder structure. On the cow side, the Lucy cow family was one of the originals at Wilbar for Jake & Bern. As you work your way back through this pedigree, you'll find cows like 280X, 607L and 488X (a 1988 X) providing proof of longevity, productivity & soundness. Old 488X still comes up when Bryan reminisces about good cows of days gone by. 816H herself is carrying a service to Remital F Rainman 2H, the \$32,000 ½ interest bull we purchased in the spring. He'll add muscle, shape and whole extra layer of maternal strength.

**Exposed April 13 to May 18, 2021 to Remital F Rainman 2H**  
OFFERED BY WILBAR CATTLE CO

**47**

### WILBAR LUCY 816H

WJD 816H      22/01/2020      2147953

BAR-E-L NATURAL LAW 52Y  
PM EXECUTIVE DECISION 5'17  
PM BLOSSOM 124'13

S A V BISMARCK 5682  
BAR-E-L MAGNOLIA 143K  
HF THUNDERBIRD 146Y  
POPLAR MEADOWS BLOSSOM 5'10  
BROOKING BANK NOTE 4040  
BROOKING MAUREEN EMILIE 350  
BAR-E-L UNFORGIVEN 102U  
WILBAR LUCY 607L

BROOKING REWIND 6023  
WILBAR LUCY 503F  
WILBAR LUCY 280X

CE	BW	WW	YW	MILK
7.0	1.3	44	69	17

**48**

### BLAIR'S TIBBIE 651H

BBC 651H      21/03/2020      2146200

S A V REGISTRY 2831  
S A V BACH 7307  
S A V BLACKCAP MAY 4136

RITO 707 OF IDEAL 3407 7075  
S A V MADAME PRIDE 0075  
S A V 8180 TRAVELER 004  
S A V MAY 2397

SOO LINE LOCOMOTIVE 1403  
BLAIR'S TIBBIE 516E  
BLAIR'S TIBBIE 372C

SOO LINE MOTIVE 9016  
SHADY BROOK EVERENTENSE 2039  
BNC GAME CHANGER 1Y  
BLAIRS TIBBIE 225Z

CE	BW	WW	YW	MILK
1.0	3.4	59	104	21

SAV Bach is a full sib to SAV Seedstock and SAV Sensation. He has done an excellent job of producing big ribbed, long made females that look and act the part. Feel confident when adding SAV Bach females to your herd.

**AI Bred on May 13 to HF Entertainer. Exposed to Merit Whiskey 8010F from May 31-July 29.**

**Favorable to Pasture due late April.**

OFFERED BY BLAIRS.AG CATTLE COMPANY



*Lot 49*

**49**

### BLAIR'S GLENELLA 669H

BBC 669H      29/03/2020      2146204

S A V INTERNATIONAL 2020  
S A V NATIONAL ANTHEM 5740  
A C DUKE GIRL 57

S A V HARVESTOR 0338  
S A V EMBLYNETTE 5483  
CAR TRACKER 305  
A C DUKE GIRL 330

YOUNG DALE ZIAIR 28Z  
YOUNG DALE GLENELLA 52B  
YOUNG DALE GLENELLA 20S

HF TIGER 5T  
YOUNG DALE POLLYANNA 22P  
YOUNG DALE T.D. 6P  
YOUNG DALE GLENELLA 37P

CE	BW	WW	YW	MILK
-2.0	3.7	56	92	29

Youngdale Angus is well know for producing genetics that add performance to a program. SAV National Anthem 5740 matches up well with the Glenella 52B and she was a 114 WW ratio.

Performance and type come together in Blair's Glenella 669H.

**AI Bred on May 13, 2021 to HF Entertainer. Exposed to Merit Whiskey 8010F from May 31-July 29, 2021. Favorable to AI due late February.**

OFFERED BY CALDER JONES



50

### BLAIR'S FINAL ATTRACTION 559H

BBC 559H 29/02/20 2146592

BAR-H CROSSFIRE 63A  
**SIX MILE DESERT STORM 94D**  
 SIX MILE FALLING STAR 219Y

WIWA CREEK MONARCH 53'08  
**BLAIR'S ANNIE FINAL ATTRACTION**  
 NLC FATAL ATTRACTION 1W

S TITLEST 1145  
 HF TIBBIE 93U  
 S A V HEAVY HITTER 6347  
 ROSE HILL DARK STAR 22  
 SWITZ MONARCH 7R  
 WIWA CREEK ERICA 81'06  
 DUFF NEW ATTRACTION 6110  
 DOUBLE AA BELLA 31'05

CE	BW	WW	YW	MILK
7.0	1.3	38	68	21

Roger Peters made the comment on his tour that he was very impressed with how well Six Mile Desert Storm has worked in our program. They are maternal, soft made, angular and great mothers. Blair's Final Attraction 559H also brings together Wiwa Creek Monarch and the predictable Final Attraction 1W. **AI Bred on May 13, 2021 to HF Entertainer 54H. Exposed to Merit Whiskey 8010F from May 31-July 29, 2021. Favorable to Pasture due early March.** OFFERED BY BLAIRS.AG CATTLE COMPANY

51

### BLAIR'S LASS 560H

BBC 560H 29/02/2020 2147042

BAR-H CROSSFIRE 63A  
**SIX MILE DESERT STORM 94D**  
 SIX MILE FALLING STAR 219Y

S A V NATIONAL ANTHEM 5740  
**BLAIR'S LASS 629F**  
 NORDAL 468Z LASS 668C

S TITLEST 1145  
 HF TIBBIE 93U  
 S A V HEAVY HITTER 6347  
 ROSE HILL DARK STAR 22P  
 S A V INTERNATIONAL 2020  
 A C DUKE GIRL 57  
 SOO LINE MOTIVE 9016  
 NORDAL 368W LASS 468Z

CE	BW	WW	YW	MILK
6.0	1.5	47	89	23

A calving ease pedigree off a SAV National Anthem x Soo Line Motive 3 year old. More proof as to why you want to add Six Mile Desert Storm 94D into your program. **AI Bred on May 13, 2021 to HF Entertainer 54H. Exposed to Merit Whiskey 8010F from May 31-July 29, 2021. Due early March.** OFFERED BY BLAIRS.AG CATTLE COMPANY

52

### BLAIR'S JENN'S FAY 720H

BBC 720H 19/04/2020 2146202

S A V REGISTRY 2831  
**S A V BACH 7307**  
 S A V BLACKCAP MAY 4136

O C C LEGACY 839L  
**BLAIR'S JENN'S FAY 519E**  
 PONDEROSA JENN'S 1406 FAY 135A

RITO 707 OF IDEAL 3407 7075  
 S A V MADAME PRIDE 0075  
 S A V 8180 TRAVELER 004  
 S A V MAY 2397  
 O C C ECHELON 857E  
 O C C DIXIE ERICA 960E  
 EXAR FIRST CLASS 1406B  
 JEN 527S FAY 106X

CE	BW	WW	YW	MILK
4.0	2.3	49	88	17

SAV Bach 7307 daughters are maturing into very productive cows and Blair's Jenn's Fay 720H will make you take a second look on sale day. **AI Bred on May 13, 2021 to HF Entertainer 54H. Exposed to Merit Whiskey 8010F from May 31-July 29, 2021. Favorable to AI due late February.** OFFERED BY BLAIRS.AG CATTLE COMPANY





*Lot 53*

# BLAIR'S PRIDE 502J

OFFERED BY BLAIRS.AG CATTLE COMPANY

**53**

## BLAIR'S PRIDE 502J

BBC 502J      10/02/2021      2195988

BAR-H CROSSFIRE 63A  
**SIX MILE DESERT STORM 94D**  
 SIX MILE FALLING STAR 219Y

BLAIR'S CONDOR EURO 404D  
**BLAIR'S PRIDE 310G**  
 BLAIR'S PRIDE 236B

S TITLEST 1145  
 HF TIBBIE 93U  
 S A V HEAVY HITTER 6347  
 ROSE HILL DARK STAR 22P  
 ERRE TE 383 CONDOR EURO  
 SAN IGNACIO 20 GARUFA 8058  
 RING CREEK BIG PAYOUT 41Z  
 LLB MISSIE PRIDE 10Y

CE	BW	WW	YW	MILK
8.0	0.6	44	80	21

Six Mile Desert Storm has done an excellent job for us and brings calving ease, great hair, udder quality and docility to his offspring. Take a serious look at this heifer and take note of the Argentine genetics on the bottom side.

**54**

## BLAIR'S ELBA 524J

BBC 524J      24/02/2021      2196001

COLEMAN CHARLO 0256  
**BLAIR'S MARTIAL LAW 593E**  
 BAR-E-L ERICA 74A

SIX MILE DESERT STORM 94D  
**BLAIR'S ELBA 506F**  
 BLAIR'S ELBA 708D

O C C PAXTON 730P  
 BOHI ABIGALE 6014  
 BAR-E-L NATURAL LAW 52Y  
 HF ERICA 339T  
 BAR-H CROSSFIRE 63A  
 SIX MILE FALLING STAR 219Y  
 GREENE POKERFACE 1304  
 RINGSTEAD ELBA 669X

CE	BW	WW	YW	MILK
4.0	3.1	52	95	26

Another big bodied, great haired Martial Law 593E daughter off a Six Mile Desert Storm daughter. Take note of the Erica 74A in the pedigree.

OFFERED BY BLAIRS.AG CATTLE COMPANY



Tilda 564H - Paternal Sib  
 Owned with SSS Red Angus & Sunberry Valley



Wilbar Susie 43J is extra long sided, elegant in her front third and still has that big sweep to her rib. South Point 8362 has been introduced to the World as the "International Champion" which was no doubt a Bucket List experience, but what he is doing in the breeding pasture in our eyes is even more impressive. The length, the performance and the style are all undeniable in his calves. Cross this with an absolutely gorgeous Eastwood cow, Wilbar Susie 500B, and you get 43J. She is a powerful individual with the dimension and style that makes the photographers job easy on picture day! Susie 43J is quiet and easy to handle in addition to having a ton of hair. She would make a fun and competitive show heifer. All of our heifer consignments are halterbroke. Take note Juniors! OFFERED BY WILBAR CATTLE CO



South Point- Sire

*Lot 55*

**55**

**WILBAR SUSIE 43J**

WJD 43J      07/02/2021      2204284

STEVENSON TURNING POINT  
**CONLEY SOUTH POINT 8362**  
 P R LADY 909 4200-587

WILBAR EASTWOOD 200X  
**WILBAR SUSIE 500B**  
 WILBAR SUSIE 30Z

PLATTEMERE WEIGH UP K360  
 STEVENSON PRIDE 167X  
 S A V NET WORTH 4200  
 P R 587 205-537  
 BAR-E-L UNFORGIVEN 102U  
 WILBAR GEORGINA 476S  
 PEAK DOT CAPACITY 601W  
 WILBAR SUSIE 868U

CE	BW	WW	YW	MILK
-1.0	4.9	51	91	21

**56**

**WILBAR MAYFLOWER 11J**

WJD 11J      22/01/2021      2203985

JINDRA ACCLAIM  
**RBM RAVE**  
 RBM POLLY B66

WILBAR CAPACITY 99Z  
**WILBAR MAYFLOWER 10D**  
 WILBAR MAYFLOWER 454Y

JINDRA 3RD DIMENSION  
 JINDRA BLACKBIRD LASSY 1111  
 CONNEALY FINAL PRODUCT  
 RBM CC7 Y316  
 PEAK DOT CAPACITY 601W  
 WILBAR GEORGINA 17P  
 BAR-E-L UNFORGIVEN 102U  
 WILBAR MAYFLOWER 731M

CE	BW	WW	YW	MILK
14.0	-2.3	50	95	22

Wilbar Mayflower 11J is the type of heifer you just know will make a great cow. She has that broody, maternal look already at a young age. The Mayflower cow family is currently our largest in cow numbers and for good reason, they are factories. The Mayflowers are responsible for a lot of great cattle that have come out of our herd including as of late our most recent 2021 \$20,000 high selling bull, Wilbar Executive Order to Everblack Angus and our feature consignments to the recent Rose Bowl sale. This will be the first daughter of the Alta Genetics bull RBM Rave that we have sold. We like the look of the Rave daughters and some sons will certainly highlight our bull sale in the spring. Mayflower 11J has an exceptionally quiet disposition and would make a great choice as a junior project OFFERED BY WILBAR CATTLE CO



*Lot 56*



*Lot 57*

# WILBAR EMULOTA 20J

OFFERED BY WILBAR CATTLE CO

Wilbar Emulota 20J is a unique and deserving individual to highlight our heifer calf division. She is the first female to sell out of our new Emulota cow family. The Emulota line of cows was made famous by the Tiedman (BALDCO) cow herd in Nebraska. They are big ribbed, massive bodied cows with impeccable udder quality. After a trip to the Werner Dispersal in Illinois we came across BALDCO Emulota 964, a past \$64,000 high seller in Denver and a full sister to the Select Sires bull JMB Traction. She impressed us in every capacity. After getting 964 home we flushed her to Brooking Rewind 6023, a bull that has left us outstanding daughters. The result included the dam of this heifer and Wilbar Greenlight, our new junior herd sire & Agribition Supreme qualifier. Combine this powerful pedigree with the International Champion, South Point and you get this ideal female. Bold ribbed, big topped with an elegant, proud front end that grabs your attention. Her pedigree is stacked with cow families that can definitely get it done. It's exciting when a breeding plan works out! I'd say this one hit a Home Run and can't wait to see what her future has in store.

**57**

WJD 20J	26/01/2021	2203755		
STEVENS ON TURNING POINT <b>CONLEY SOUTH POINT 8362</b> P R LADY 909 4200-587	PLATTEMERE WEIGH UP K360 STEVENS ON PRIDE I167X S A V NET WORTH 4200 P R 587 205-537			
BROOKING REWIND 6023 <b>WILBAR EMULOTA 744G</b> BALDCO EMULOTA 964	BROOKING BANK NOTE 4040 BROOKING MAUREEN EMILIE 350 SITZ TOP GAME 561X JMB EMULOTA 013			
<b>CE</b>	<b>BW</b>	<b>WW</b>	<b>YW</b>	<b>MILK</b>
10	0.3	57	95	23



Conley South Point 8362 - Sire



Greenlight - Full Sib to Dam



Baldco Emulota 964B - Granddam



*Lot 58*

# RED WILBAR TER-RON HELGA 865J

OFFERED BY WILBAR CATTLE CO

**58**

WJDK 865J      3/02/2021      2204673

RED SLGN WIDELoad 920W  
**RED MANN RED BOX 55C**  
 RED PELTON MISS AJA 0839U

RED UBAR HIGH CAPACITY 224  
 RED MEADO-WEST PERSUASION  
 RED 5L NORSEMAN KING 2291  
 RED PELTONS MISS IDA 0547R  
 DKF ELIMINATOR 15A  
 DKF MISS NET WORTH 21A  
 RED TER-RON RELOAD 703T  
 RED WILBAR HELGA 612S

RED DKF RAZOR 55C  
**RED WILBAR HELGA 211E**  
 RED WILBAR HELGA 744C

Helga 865J definitely has the "WOW" factor to highlight our red division. She is powerful from all angles. Dark red, dark foot, big boned, long spined, the list goes on and on. Truthfully we haven't even talked about the best part of this future donor cow. Her dam, Red Wilbar Helga 211E a past \$14,000 half interest past high seller at Red Round Up to Ter-Ron Farms. She is said by many to be as close to the perfect cow as any. Her production record so far is holding up that reputation. Her first calf is a bull called Inspiration who saw heavy service here at Wilbar and will have sons highlighting our 2022 bull sale and another son sold to a progressive commercial cattleman. Full sib embryos to 865J were the high selling eggs at the past Red Round Up to Brandl Cattle Co. The exciting sire, Red Box, rounds out this sweet package. His daughters have anchored the Duff program, selling for record prices and rightfully so...they've got the look!

CE	BW	WW	YW	MILK
-8.0	5.3	63	105	27



Red Mann Red Box 55C - Sire



Red Wilbar Helga 211E- Dam



**59A**

**RED BLAIR'S JESSIE 128J**

BBC 128J      04/03/2021      2201405

CE	BW	WW	YW	MILK
-0.5	2.3	40	73	26

Mann Red Box has done it big time on these SSS Jessie 261Z daughters. Jessie 261Z was our \$42,000 pick of the SSS Red Angus program and these Red Box daughters are a perfect example of why she was our pick. These heifers are getting more powerful each day and you can be the judge on which one fits your program best but I am confident they will be donors.

**Retaining 50% embryo interest. Entered at CWA**  
OFFERED BY BLAIRS.AG CATTLE COMPANY



Red SSS Jessie 261Z - Dam

RED SLGN WIDELoad 920W  
**RED MANN RED BOX 55C**  
 RED PELTON MISS AJA 0839U

RED SSS SOLDIER 365W  
**RED SSS JESSIE 261Z**  
 RED SSS JESSIE 654X

RED UBAR HIGH CAPACITY 224  
 RED MEADO-WEST PERSUASION  
 RED 5L NORSEMAN KING 2291  
 RED PELTONS MISS IDA 0547R

RED SVR KNIGHT 236T  
 RED SSS BELLE 342S  
 RED BRYLOR BIG ROCK 85T  
 RED SSS JESSIE 112R

**59B**

**RED BLAIR'S JESSIE 130J**

BBC 130J      04/03/2021      2201412

CE	BW	WW	YW	MILK
-0.5	3.0	41	75	26

You will love the job of analyzing these 4 full sisters to see which "one" or "ones" fit your program best. Either way, you are going to get a shot of the great SSS Jessie 261Z.

**Entered in CWA**

OFFERED BY BLAIRS.AG CATTLE COMPANY



**59C**

**RED BLAIR'S JESSIE 157J**

BBC 157J      24/03/2021      2196063

CE	BW	WW	YW	MILK
-0.5	2.3	40	73	26

If you like them long hiped and big ribbed with an extra shot of bone, take a serious look here. This March 24th Mann Red x Jessie 261Z is really bringing the power & performance.

**Entered at CWA.**

OFFERED BY BLAIRS.AG CATTLE COMPANY



**59D**

**RED BLAIR'S JESSIE 133J**

TATTOO: BBC 133J      DOB: 04/03/2021      REG: 2201402

CE	BW	WW	YW	MILK
-0.5	4.8	44	81	26

These 4 sisters are all excellent in their type but 133J might be the one to catch your eye on sale day. Look at the front end on this beauty

OFFERED BY BLAIRS.AG CATTLE COMPANY





# RED BLAIR'S YANKEE 141J

OFFERED BY BLAIR'S.AG

60

BBC 141J

16/03/2021

2201397 OSF

RED SLGN WIDELoad 920W  
**RED MANN RED BOX 55C**  
 RED PELTON MISS AJA 0839U

RED UBAR HIGH CAPACITY 224  
 RED MEADO-WEST PERSUASION  
 RED 5L NORSEMAN KING 2291  
 RED PELTONS MISS IDA 0547R  
 RED NORTHLINE ROB ROY 122K  
 RED DMM MISS ESSENCE 58M  
 RED FINE LINE MULBERRY 26P  
 RED FINE LINE YANKEE 14R

RED BRYLOR/WSP KARWEIK 1P  
**RED WSF MS YANKEE 13T 12W**  
 RED FINE LINE YANKEE 13T

CE	BW	WW	YW	MILK
-2.0	3.9	45	82	26



MS YANKEE 12W - DAM TO LOT 60 & 61

Attention Red Angus show peeps! Blair's Yankee 141J is plum cool and she is a March born and we know that March born heifers make the best bred heifers. Blair's Yankee 141J is a full sister to the heifers we sold as a choice lot in Red Roundup in Olds in

October for \$11,500 to Isabella MacKenzie. The combination of Yankee 12W and Mann Red Box produced an excellent set of full sibs and you will love the presence and style of BBC 141J.

**Retaining 50% embryo interest. Entered at CWA**

OFFERED BY BLAIRS.AG CATTLE COMPANY



*Lot 61*

# RED BLAIR'S YANKEE 178J

OFFERED BY BLAIR'S.AG

**61**

BBC 178J

10/04/2021

2206212 OSF

RED SLGN WIDELoad 920W  
**RED MANN RED BOX 55C**  
 RED PELTON MISS AJA 0839U

RED UBAR HIGH CAPACITY 224  
 RED MEADO-WEST PERSUASION  
 RED 5L NORSEMAN KING 2291  
 RED PELTONS MISS IDA 0547R  
 RED NORTHLINE ROB ROY 122K  
 RED DMM MISS ESSENCE 58M  
 RED FINE LINE MULBERRY 26P  
 RED FINE LINE YANKEE 14R

RED BRYLOR/WSP KARWEIK 1P  
**RED WSF MS YANKEE 13T 12W**  
 RED FINE LINE YANKEE 13T

CE	BW	WW	YW	MILK
-2.0	3.9	45	82	26

Get your marker out!! 178J is a full sister to the choice lot that sold in Red Roundup to Brylor Ranch. You won't find one that has a front end any cooler than Red Blair's Yankee 178J. Bring your kids on sale day and watch them fall in love.

OFFERED BY BLAIRS.AG CATTLE COMPANY



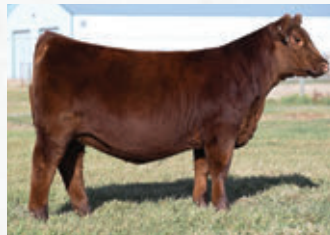
Red Mann Red Box 55C - Sire to Lots 60 & 61



## RED BLAIRS PRICILLA 44Z

OFFERED BY BLAIRS.AG CATTLE COMPANY. & DOUBLE B ANGUS

To put it simply - there will never be another Pricilla 44Z. What started out as a haired up, bomb proof 4H heifer has turned into one of the most recognized Red Angus donors in the industry. She dominated the Canadian show circuit as a yearling and two-year-old, being named the Agribition Futurity Champion and an RBC Beef Supreme Top 10 Finalist. Since then, her offspring have been sale features across the globe in some of the world's most respected operations. Whatever way she's bred, Priscilla consistently produces good looking, big ribbed, awesome made cattle with picture perfect udders. We are extremely excited to not only offer 44Z daughters, but these embryo packages can truly be the opportunity to step up any program's quality. Do not miss getting your paws on the best maternal lineages of any breed.



Progeny of RED Blairs Pricilla 44Z

*The Pricilla's Sell as Lots 62-65 Lots 68-70*





*Lot 62*

# RED DOUBLE B PRISCILLA 121

OFFERED BY DOUBLE B ANGUS

Red Double B Priscilla 121 truly embodies what we strive to do in our program.

Good-looking, big-bodied, stout-made females with structural integrity, backed by reputable genetics. Red Box x Priscilla 44Z matings have been standouts across Canada and the United States as they dominate the show ring, including the 2021 Kansas State Fair Reserve Champion Female. To say we are sad parting with this ultra-striking female is an understatement, but we cannot wait to see the true profit potential she brings to any program as she steps up the pace of any genetic arsenal.

Entered at CWA.

		<b>62</b>			
BAX 21J	09/03/2021	2235573			
RED SLGN WIDELoad 920W	RED UBAR HIGH CAPACITY 224				
<b>RED MANN RED BOX 55C</b>	RED MEADO-WEST PERSUASION				
RED PELTON MISS AJA 0839U	RED 5L NORSEMAN KING 2291				
	RED PELTONS MISS IDA 0547R				
RED RINGSTEAD KARGO 215U	RED RINGSTEAD KARGO 107M				
<b>RED BLAIRS PRICILLA 44Z</b>	RED RINGSTEAD MS EQUAL 589P				
RED BRYLOR PRISCILLA 67W	RED BRYLOR SDL RICHTER 212R				
	RED BRYLOR PRISCILLA 304S				
CE	BW	WW	YW	MILK	
-1.5	2.7	45	79	23	



Red Brown Priscilla 415H- Full Sister  
Reserve Champion Red Angus Female 2021 KSF



Red Brown Priscilla 415H- Full Sister



Red Blairs Priscilla 44Z-Dam



Red Blairs Priscilla 44Z-DAM



Red Damar Trump C512-SIRE

Talk about a neat look from the side. This extended, flat-shouldered, level-designed heifer is built so right in terms of her hip and hind leg. Trump has been a go-to sire in the redAngus breed, stamping his daughters with that cocky, attractive look. Toss in 44Z's proven cowpower and low input phenotype, you'll never have to question this dark cherry, moderate, stoutmade heifer's ability to do her job of raising consistent, top-end replacements.

OFFERED BY DOUBLE B ANGUS

63

## RED DOUBLE B PRISCILLA 120

BAX 20J 08/03/2021 2235581

RED SOO LINE POWER EYE 161X  
**RED DAMAR TRUMP C512**  
 RED DAMAR OH BABY W168

RED COCKBURN RIBEYE 308U  
 RED TR LYNN 301R  
 RED FINE LINE MULBERRY 26P  
 RED T-S OLIVIA 706P  
 RED RINGSTEAD KARGO 107M  
 RED RINGSTEAD MS EQUAL 589P  
 RED BRYLOR SDL RICHTER 212R  
 RED BRYLOR PRISCILLA 304S

CE	BW	WW	YW	MILK
6.5	0.1	32	55	20

64

## RED DOUBLE B PRISCILLA 119

BAX 19J 08/03/2021 2235568

RED SOO LINE POWER EYE 161X  
**RED DAMAR TRUMP C512**  
 RED DAMAR OH BABY W168

RED COCKBURN RIBEYE 308U  
 RED TR LYNN 301R  
 RED FINE LINE MULBERRY 26P  
 RED T-S OLIVIA 706P  
 RED RINGSTEAD KARGO 107M  
 RED RINGSTEAD MS EQUAL 589P  
 RED BRYLOR SDL RICHTER 212R  
 RED BRYLOR PRISCILLA 304

CE	BW	WW	YW	MILK
6.5	0.1	32	55	20



Red Blairs Priscilla 44Z-DAM



Red Damar Trump C512-SIRE

Red Double B Priscilla 119, or "Peep" as she's known in the barn, has always caught eyes since birth. Her moderate frame size, rib shape, and perfect udder development have a lot to offer come breeding season. Priscilla 44Z's daughters have built a reputation for being easy fleshing, maternal, sound structured females with awesome udders and that enticing dark hair coat, so we feel 119 fits the mould rather easily. Coupled with her dog-quiet disposition, she would make the perfect Christmas present for any young red-Angus enthusiast looking to boost their herd with a proven genetic background.

OFFERED BY DOUBLE B ANGUS



# RED DOUBLE B PRISCILLA 110

OFFERED BY DOUBLE B ANGUS

The red Angus world needs no introduction to this one's pedigree. PTO dominated the show circuit in 2018, culminating his show career by being named the National Champion Red Angus Bull in Fort Worth, TX. Priscilla 44Z has also seen her fair share of banners, being named the 2014 Canadian Western Agribition First Lady Futurity Champion and RBC Beef Supreme Top 10 Finalist. Priscilla 110 is a big outline, bold ribbed female whose extra substance, stoutness, and bone, coupled with a proven genetic lineage, will surely be an asset once sent into production.

**65**

BAX 10J	12/02/2021	2235479
RED SOO LINE POWER EYE 161X	RED COCKBURN RIBEYE 308U	RED TR LYNN 301R
RED KJHT POWER TAKE OFF	RED NORTHLINE FAT TONY 605U	RED SRA PICABO PROMISE
RED SRA PAINTBUCKET	RED RINGSTEAD KARGO 107M	RED RINGSTEAD MS EQUAL 589P
RED RINGSTEAD KARGO 215U	RED BRYLOR SDL RICHTER 212R	RED BRYLOR PRISCILLA 304S
<b>RED BLAIRS PRICILLA 44Z</b>		
RED BRYLOR PRISCILLA 67W		

CE	BW	WW	YW	MILK
2.0	2.0	38	71	21



Red Blairs Priscilla 44Z-Dam



Red Double B Bullseye 1B  
(Power Eye x 44Z son)



KJHT Power Take Off 8717-Sire

All we can say is "she got it from her momma." This Larkaba 42A daughter inherited all of the right things: moderation, huge ribcage, stout pinset, and that easy-doing look. 42A's ability to hit it out of the park with each and every mating has made her a cornerstone breeding piece for us, having raised Backroad 2C, sold to McLemore Farms, Autograph 2D, sold to Six Mile Ranch, and Lucky Strike 9001, sold to Tres Marías (Argentina) and El Sauz (Mexico). Not only do we see an elite bull maker status in her future, but this girl's second to none disposition would be perfect for any junior exhibitor. Entered at CWA.



# RED DOUBLE B LARKABA 124

OFFERED BY DOUBLE B ANGUS

66

BAX 24J

12/03/2021

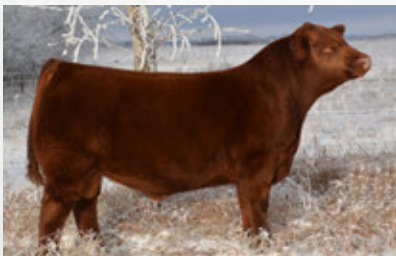
2235492

DKF ELIMINATOR 15A  
**RED DKF RAZOR 55C**  
 DKF MISS NET WORTH 21A

RED WHEEL GANGSTER 31Y  
**RED BLAIR'S LARKABA 42A**  
 RED BLAIRS LARKABA 101Y

S A V ELIMINATOR 9105  
 RED DKF MISS POWER 17P  
 S A V NET WORTH 4200  
 DKF MISS POWER UP 95X  
 RED SVR GANGSTER 14S  
 BLACK WHEEL COUNTESS 69S  
 RINGSTEAD DAWSON 717T  
 RED BLAIR'S LARKABA 17T

CE	BW	WW	YW	MILK
-3.5	3.5	42	72	28



Red Double B Backroad 2C- Maternal Brother



Red Double B 6M Autograph 2D- Maternal Brother



Red Double B Lucky Strike 9001- Maternal Brother



Red Blairs Larkaba 42A-Dam



Red Double B Larkaba 9010-Full Siter



*Lot 67*

# RED DOUBLE B ALICE 118

OFFERED BY DOUBLE B ANGUS

**67**

BAX 18J	04/03/2021	2235563
RED SIX MILE SIGNATURE 295B	RED SIX MILE GRAND SLAM 130Z	
<b>RED DOUBLE B 6M AUTOGRAPH 2D</b>	RED SELMA OF SIX MILE 358X	
RED BLAIR'S LARKABA 42A	RED WHEEL GANGSTER 31Y	
	RED BLAIRS LARKABA 101Y	
RED SIX MILE TAURUS 519A	RED SIX MILE GAME FACE 164Y	
<b>RED SIX MILE ALICE 131D</b>	RED SIX MILE SHAWNEE 116T	
RED TER-RON ALICE 119B	RED SIX MILE SURE SHOT 195Z	
	RED TER-RON ALICE 137Z	

Did someone say brood cow deluxe? We sure did. Red Double B Alice 118 combines two of the most historic red Angus cow families on both sides of her pedigree. We were fortunate enough to purchase 131D in the 2016 Genetic Focus Sale from Six Mile Ranch, and her phenotype has landed her as one of our top-end donors: an elegant look and soft rib cage with a beautiful udder and sound feet and legs. Plus, a 131D two-year-old will highlight our sale bulls next spring. Toss in Autograph's awesome dark cherry hair coat and maternal strength, we have no doubt 118's genuine shape and power will get her name stamped in bull sale catalogues under some of your program's featured lots. Entered at CWA.

CE	BW	WW	YW	MILK
-1.5	3.3	31	49	27



Red Double B 6M Autograph 2D- Sire



Red Six Mile Alice 131D- Dam

**68A****RED U-2 RENOWN 193C X  
RED BLAIRS PRICILLA 44Z****PACKAGE OF FOUR (4) EMBRYOS**RED U-2 RECKONING 149A  
**RED U-2 RENOWN 193C**  
RED U-2 ENVIOUS 147XRED U-2 RECON 192Y  
RED U-2 ANEXA 271Y  
RED U-2 DYNAMO 7021T  
RED U-2 ENVIOUS 216M  
RED RINGSTEAD KARGO 107M  
RED RINGSTEAD MS EQUAL 589P  
RED BRYLOR SDL RICHTER 212R  
RED BRYLOR PRISCILLA 304SRED RINGSTEAD KARGO 215U  
**RED BLAIRS PRICILLA 44Z**  
RED BRYLOR PRISCILLA 67W

(PE)	CE	BW	WW	YW	MILK
-7.0		4.5	43	65	18.5

Guarantee Two(2) pregnancy out of each lot if implanted by a Certified ET Technician. Canadian Qualified Only.  
Stored at Bow Valley Genetics**68B****RED U-2 RENOWN 193C X  
RED BLAIRS PRICILLA 44Z****PACKAGE OF FOUR (4) EMBRYOS**RED U-2 RECKONING 149A  
**RED U-2 RENOWN 193C**  
RED U-2 ENVIOUS 147XRED U-2 RECON 192Y  
RED U-2 ANEXA 271Y  
RED U-2 DYNAMO 7021T  
RED U-2 ENVIOUS 216M  
RED RINGSTEAD KARGO 107M  
RED RINGSTEAD MS EQUAL 589P  
RED BRYLOR SDL RICHTER 212R  
RED BRYLOR PRISCILLA 304SRED RINGSTEAD KARGO 215U  
**RED BLAIRS PRICILLA 44Z**  
RED BRYLOR PRISCILLA 67W

(PE)	CE	BW	WW	YW	MILK
-7.0		4.5	43	65	18.5

Guarantee Two(2) pregnancy out of each lot if implanted by a Certified ET Technician. Canadian Qualified Only.  
Stored at Bow Valley Genetics**68C****RED U-2 RENOWN 193C X  
RED BLAIRS PRICILLA 44Z****PACKAGE OF THREE (3) EMBRYOS**RED U-2 RECKONING 149A  
**RED U-2 RENOWN 193C**  
RED U-2 ENVIOUS 147XRED U-2 RECON 192Y  
RED U-2 ANEXA 271Y  
RED U-2 DYNAMO 7021T  
RED U-2 ENVIOUS 216M  
RED RINGSTEAD KARGO 107M  
RED RINGSTEAD MS EQUAL 589P  
RED BRYLOR SDL RICHTER 212R  
RED BRYLOR PRISCILLA 304SRED RINGSTEAD KARGO 215U  
**RED BLAIRS PRICILLA 44Z**  
RED BRYLOR PRISCILLA 67W

(PE)	CE	BW	WW	YW	MILK
-7.0		4.5	43	65	18.5

Guarantee One(1) pregnancy out of each lot if implanted by a Certified ET Technician. Canadian Qualified Only.  
Stored at Bow Valley Genetics**69****RED SILVEIRAS MISSION NEXUS X  
RED BLAIRS PRICILLA 44Z****PACKAGE OF FIVE (5) EMBRYOS**RED LJC MISSION STATEMENT P27  
**RED SILVEIRAS MISSION NEXUS**  
RED SILVEIRAS DAORV 8399RED LJC LANCER 806  
RED LJC HANNAH 106  
RED TROTTERS ROMEO 412  
RED MOORE'S DAORV 5365  
RED RINGSTEAD KARGO 107M  
RED RINGSTEAD MS EQUAL 589P  
RED BRYLOR SDL RICHTER 212R  
RED BRYLOR PRISCILLA 304SRED RINGSTEAD KARGO 215U  
**RED BLAIRS PRICILLA 44Z**  
RED BRYLOR PRISCILLA 67W

(PE)	CE	BW	WW	YW	MILK
6.5		-0.5	46	81	21.5

Guarantee Two(2) pregnancy out of each lot if implanted by a Certified ET Technician. Canadian Qualified Only.  
Stored at Bow Valley Genetics**70A****RED KJHT POWER TAKE OFF X  
RED BLAIRS PRICILLA 44Z****PACKAGE OF FOUR (4) EMBRYOS**RED SOO LINE POWER EYE 161X  
**RED KJHT POWER TAKE OFF**  
RED SRA PAINTBUCKETRED COCKBURN RIBEYE 308U  
RED TR LYNN 301R  
RED NORTHLINE FAT TONY 605U  
RED SRA PICABO PROMISE  
RED RINGSTEAD KARGO 107M  
RED RINGSTEAD MS EQUAL 589P  
RED BRYLOR SDL RICHTER 212R  
RED BRYLOR PRISCILLA 304SRED RINGSTEAD KARGO 215U  
**RED BLAIRS PRICILLA 44Z**  
RED BRYLOR PRISCILLA 67W

(PE)	CE	BW	WW	YW	MILK
2.0		2.0	38	71	21

Guarantee Two(2) pregnancy out of each lot if implanted by a Certified ET Technician. Canadian Qualified Only.  
Stored at Bow Valley Genetics**70B****RED KJHT POWER TAKE OFF X  
RED BLAIRS PRICILLA 44Z****PACKAGE OF THREE (3) EMBRYOS**RED SOO LINE POWER EYE 161X  
**RED KJHT POWER TAKE OFF**  
RED SRA PAINTBUCKETRED COCKBURN RIBEYE 308U  
RED TR LYNN 301R  
RED NORTHLINE FAT TONY 605U  
RED SRA PICABO PROMISE  
RED RINGSTEAD KARGO 107M  
RED RINGSTEAD MS EQUAL 589P  
RED BRYLOR SDL RICHTER 212R  
RED BRYLOR PRISCILLA 304SRED RINGSTEAD KARGO 215U  
**RED BLAIRS PRICILLA 44Z**  
RED BRYLOR PRISCILLA 67W

(PE)	CE	BW	WW	YW	MILK
2.0		2.0	38	71	21

Guarantee One(1) pregnancy out of each lot if implanted by a Certified ET Technician. Canadian Qualified Only.  
Stored at Bow Valley Genetics

71

### RED BLAIR'S HEATHER 108J

BBC 108J      22/02/2021      2195995

RED SOO LINE POWER EYE 161X  
**RED DAMAR TRUMP C512**  
 RED DAMAR OH BABY W168

RED U-2 FOREIGNER 413B  
**RED BLAIR'S HEATHER 414F**  
 RED OLE HEATHER 66D

RED COCKBURN RIBEYE 308U  
 RED TR LYNN 301R  
 RED FINE LINE MULBERRY 26P  
 RED T-S OLIVIA 706P  
 U2 T.K.O.254Z  
 RED U-2 ANEXA 8026U  
 XO CROWFOOT 0102X  
 CROWFOOT 3177N

CE	BW	WW	YW	MILK
8.0	0.7	35	61	21

Here is a heifer that we think has a great future. She brings together the predictability of Red U2 Foreigner and Red Damar Trump C512. She is bold in her rib, big hipped and comes with that extra bone needed to raise performance cattle. You can count on her raising herd bulls and power females.  
 OFFERED BY BLAIRS.AG CATTLE COMPANY



72

### RED BLAIR'S MS K TONY 103J

BBC 103J      19/02/2021      2228125

RED SOO LINE POWER EYE 161X  
**RED DAMAR TRUMP C512**  
 RED DAMAR OH BABY W168

RED NORTHLINE FAT TONY 605U  
**RED COLLIER MS. K TONY R817**  
 RED BAR-E-L KASSIE 3P

RED COCKBURN RIBEYE 308U  
 RED TR LYNN 301R  
 RED FINE LINE MULBERRY 26P  
 RED T-S OLIVIA 706P  
 RED SVR GANGSTER 14S  
 RED NORTHLINE RUBY 0305N  
 RED BAR-E-L APPROVAL 4L  
 RED BAR-E-L KASSIE 012G

CE	BW	WW	YW	MILK
11.0	-1.2	19	35	21

We can't say enough good things about how well Damar Trump C512 has worked in terms of maintaining calving ease while increasing performance. Check out the Kassie cow family on the bottom of this pedigree. Ms K will catch your fancy on sale day.  
 OFFERED BY BLAIRS.AG CATTLE COMPANY AND BLACK MAMBA ANGUS GROUP, SOUTH AFRICA



73

### RED BLAIR'S SEREBL 113J

BBC 113J      23/02/2021      2196000

RED SOO LINE POWER EYE 161X  
**RED DAMAR TRUMP C512**  
 RED DAMAR OH BABY W168

RED RINGSTEAD KARGO 215U  
**RED BLAIR'S SEREBL 505F**  
 RED WRAZ SEREBL 2D

RED COCKBURN RIBEYE 308U  
 RED TR LYNN 301R  
 RED FINE LINE MULBERRY 26P  
 RED T-S OLIVIA 706P  
 RED RINGSTEAD KARGO 107M  
 RED RINGSTEAD MS EQUAL 589P  
 RED BRYLOR JKC GHOST RIDER108Y  
 RED KMAC SEREBL 95N

CE	BW	WW	YW	MILK
4.0	2.4	35	61	19

Check out this pedigree folks. Power Eye 161X, Mulberry 26P, Ringstead Kargo 215U and Brylor Ghost Rider 108Y. This heifer is cool in her pedigree and you will love how powerful and hairy she is. Lots of maternal calving ease built into this female.  
 OFFERED BY BLAIRS.AG CATTLE COMPANY





Bayberry is a soft made, excellent haired heifer. She is big topped with great spring in her rib and has a really cool look and presence. The Bayberry cow family has been with us possibly as long as any other in our herd. They are likely best known for perfect udder structure and an excellent record for producing front pasture kind of daughters like this one. The sire of 834J is a \$30,000 sale feature from the Triple S program. In his first calf crop he has left us an outstanding set of daughters that are very uniform in look and type. Recently a 3/4 sister sold as an \$11,500 sale feature at the 49th Annual Red Round Up sale to Sydney Dorrance and another was Owen's selection for his 2022 junior show project. His sons will be highlights in the bull pen with very manageable birthweights and the same attractive pattern as their sisters.  
OFFERED BY WILBAR CATTLE CO

**74**

**RED WILBAR BAYBERRY 834J**

WJD 834J 27/01/2021 2204431

- RED SSS GRAVITY 296E
- RED SSS GLENFIDDICH 741G**
- RED SSS DUCHESS 416C
- RED SSS BIG GAME 814A
- RED SSS LASS 704A
- RED FLYING K MAX 159Y
- RED SSS DUCHESS 656X
- RED PIE SPECIALIST 430
- RED WILBAR BRNDINA 638S
- RED WILBAR SPEED 32A
- RED WILBAR BAYBERRY 694S
- RED WILBAR ELEMENT 220E
- RED WILBAR BAYBERRY 413G**
- RED WILBAR BAYBERRY 225E

CE	BW	WW	YW	MILK
6.0	-0.5	33	63	23

**75**

**RED BLAIRSWEST QUEEN 75J**

MJNB 75J 14/02/2021 2235534

- RED U-2 RECKONING 149A
- RED U2 BONO 215D**
- RED U-2 ANEXA 319Y
- RED U-2 RECON 192Y
- RED U-2 ANEXA 271Y
- RED BDL UPROAR 124U**
- RED U-2 ANEXA 8038U
- RED FLYING K AMBUSH 6T
- RED FLYING K LAKOTA 104U
- RED SIX MILE PARK AVE. 392P
- RED 257 YCLC 860K
- RED U-2 MAMA'S BOY 167X
- RED YCLC QUEEN 218Z**
- RED YCLC QUEEN 648X

CE	BW	WW	YW	MILK
-3.5	2.8	44	76	31



The only red heifer calf in our offering but we think she's very high in quality. Study this females length of spine, while being so massive middled, and udder development that makes the hair on the back of your neck stand up. Red U2 Bono was a 30,000 bull who sold to Heart of the Valley, they've said that bono has left them with great calves that are stout real, nice footed & performance females. U2 selected 218Z from Y coulee land & cattle when U2 selected the pick of herd and they one in the string at Canadian Western Agribition.  
Parent Verified  
OFFERED BY  
BLAIRSWEST LAND & CATTLE





*Lot 76*

# RED WILBAR LADY 647H

OFFERED BY WILBAR CATTLE CO

Red Wilbar Lady 647H is a tank of a female. Massive ribbed and broody could best describe her. The Coming In Hot females are awesome. We had many requests to sell more but insisted on holding on to the rest as we feel they are going to make a very positive impact in our cow herd in the future. Crossing Coming In Hot with a Razor daughter definitely worked and should only enhance the maternal features of each line. Coming In Hot made a big splash at our bull sale this past spring with many sale features. We used a son called Red Wilbar Highlight 624H (who was part of the \$28,000 high selling choice lot in our bull sale) heavily this past year. The AI service on Lady is also pretty special. Motivation was a \$22,000 high seller to BCR Ventures in Texas and no semen is currently available on the open market in Canada.

**AI'd April 18, 2021 to Red Wilbar Motivation 686H (Favorable)  
Exposed April 24 to May 26, 2021 to Red SSS Glenfiddich 741G**



Coming In Hot 24E-Sire



Motivation 686H-Service Sire

**76**

WJD 647H	03/02/2020	2147144
RRA AVIATOR 507		MUSGRAVE AVIATOR
<b>RED NCJ COMING IN HOT 24E</b>		RED RRA RACHEL 246 746
RED NCJ MINERVA 35C		RED NCJ LAZY MC VENOM 34Z
		RED NCJ MINERVA 13S
RED DKF RAZOR 55C		DKF ELIMINATOR 15A
<b>RED WILBAR LADY 12F</b>		DKF MISS NET WORTH 21A
RED U6 LADY 6M 63S		RED U6 TWENTY X 29P
		RED SPAERMAN LEADING LADY 483K

CE	BW	WW	YW	MILK
-1.0	1.8	60	104	24



# RED BLAIRSWEST DARLINE 33H

OFFERED BY BLAIRS WEST LAND & CATTLE

**77**

MJNB 33H      30/01/2020      2228672

RED MRLA NEW ERA 87Y  
**RED WRIGHTS CUTTING EDGE 27F**  
 RED SIX MILE CHETA 702W

RED HAYCOW CUTTING EDGE 055  
**RED BLAIR'S DARLINE 565B**  
 RED TOWAW DARLINE 15R

MRLA 53W  
 RED MRLA MISS 845S  
**RED SIX MILE SAKIC 832S**  
 RED SIX MILE CHETA 716S  
 LAFLINS CUTTING EDGE 2075  
 RED HAYCOW 370 PRINCESS 5002  
 RED SVR TALLY 13M  
 RED MOUNTAIN ASH DARLINE 6K1

Sale Feature- looky looky here! she offers so much body mass and substance while giving a very attractive look in person and on paper being in the top 20% for WW. This one motors around with very minimal effort and the calf she is carrying should be something to take into consideration. Stop by our stall at Canadian Western Agribition to view this female prior sale day where the "Opportunity Knocks". This female gained some friends at Farm Fair International being selected as Champion Senior Heifer. She is deep. She is Dark. She is Darline. Parent Verified

**AI Duff Red Blood 18114 - May 1, 2021 (favourable) PE May 7th - June 24th, 2021+ Red U2 Revival 147G**

CE	BW	WW	YW	MILK
1.0	3.0	45	69	22



Champion Senior Yearling Heifer - Farmfair International

AI Bred on May 13, 2021 to Duff Red Blood. Exposed to BMRA MR Detour 020 from May 27-July 29, 2021.  
Favorable to AI due late February



Red RX Lady Nolen Y114  
Dam to Lots 78 & 79



**78**

**RED BLAIR'S NOLEN 6H**

TATTOO: BBC 6H      DOB: 08/04/2020      REG: 2173890

RED FLYING K AMBUSH 121U  
**RED SSS AMBUSH 771X**  
RED SSS JOE 369S

RED BIEBER MAKE MIMI 7249  
**RED RX LADY NOLEN Y114**  
RED RX LADY NOLEN W142

RED SVR AMBUSH 59P  
RED FLYING K BEAUTY 40R  
RED SSS SHIVER'N JOE 699P  
RED SSS KURUBA 842L  
RED BJR MAKE MY DAY 981  
RED BIEBER SIRENA 6708  
RED FINE LINE MULBERRY 26P  
RED LMF LIZ 1501

CE	BW	WW	YW	MILK
3.0	0.5	37	59	23

**79**

**RED BLAIR'S NOLEN 2H**

BBC 2H      05/04/2020      2177140

RED FLYING K AMBUSH 121U  
**RED SSS AMBUSH 771X**  
RED SSS JOE 369S

RED BIEBER MAKE MIMI 7249  
**RED RX LADY NOLEN Y114**  
RED RX LADY NOLEN W142

RED SVR AMBUSH 59P  
RED FLYING K BEAUTY 40R  
RED SSS SHIVER'N JOE 699P  
RED SSS KURUBA 842L  
RED BJR MAKE MY DAY 981  
RED BIEBER SIRENA 6708  
RED FINE LINE MULBERRY 26P  
RED LMF LIZ 1501

CE	BW	WW	YW	MILK
3.0	-0.7	41	63	23

Sometimes you just know when a mating will work. These full sisters have predictability written all over their pedigree and consistency written all over their phenotype. The maternal possibilities combined with the cow power in these sisters makes the decision to sell hard and the decision to buy easy. They are the right frame with the right amount of shape to make them both donor prospects.  
OFFERED BY BLAIRS.AG CATTLE COMPANY

AI Bred on May 13, 2021 to Duff Red Blood. Exposed to BMRA MR Detour 020 from May 27-July 29, 2021.  
Favorable to AI due late February



Ambush 771X  
Sire to Lots 78 & 79



A very attractive KJHT PTO daughter off the Red Wildman Miss Stocky 420B donor that we own together with Brett and Tracy Wildman. She is powerful in her design and you will love her on sale day.

**AI Bred on May 13, 2021 to Blair's Rocco. Exposed to Flueury Bardolene 82G from May 26-July 29, 2021. Favorable to AI due late Feb.**

OFFERED BY BLAIRS.AG CATTLE COMPANY



**80**

**RED BLAIR'S MISS STOCKY 620H**

BBC 620H      09/03/2020      2173883

RED SOO LINE POWER EYE 161X  
**RED KJHT POWER TAKE OFF**  
RED SRA PAINTBUCKET

RED FINE LINE MULBERRY 26P  
**BLAIRS UPTOWN GIRL 105X**  
NLC UPTOWN GIRL 19U

RED COCKBURN RIBEYE 308U  
RED TR LYNN 301R  
RED NORTHLINE FAT TONY 605U  
RED SRA PICABO PROMISE  
RED COMPASS MULBERRY 449M  
RED DUS FAYETTE 8G  
SCHURRTOP MC 2500  
DOUBLE AA BELLA 31'05

CE	BW	WW	YW	MILK
1.0	2.5	43	84	19

**81**

**RED BLAIR'S UPTOWN GIRL 12H**

BBC 12H      12/04/2020      2173724

RED SOO LINE POWER EYE 161X  
**RED KJHT POWER TAKE OFF**  
RED SRA PAINTBUCKET

RED FINE LINE MULBERRY 26P  
**BLAIRS UPTOWN GIRL 105X**  
NLC UPTOWN GIRL 19U

RED COCKBURN RIBEYE 308U  
RED TR LYNN 301R  
RED NORTHLINE FAT TONY 605U  
RED SRA PICABO PROMISE  
RED COMPASS MULBERRY 449M  
RED DUS FAYETTE 8G  
SCHURRTOP MC 2500  
DOUBLE AA BELLA 31'05

CE	BW	WW	YW	MILK
2.0	2.7	38	74	21

**OUTCROSS ALERT!**

Red Blair's Uptown Girl 12H has that tick of outcross that we all look for. The MC2500 cow on the bottom side is now owned by Schwann Angus and was that great haired, soggy kind that we like to raise at Blairs. Ag. Look her up on sale day. Blair's Uptown Girl 105X was a \$42,000 high seller from Genetic Focus '15.

**AI Bred on May 13, 2021 to Duff Red Blood. Exposed to BMRA MR Detour 020 from May 27-July 29, 2021. Favorable to AI due late February**

OFFERED BY BLAIRS.AG CATTLE COMPANY



Blair's Uptown Girl 105X - Dam



# RED BLAIR'S PIEBIRD 545H

OFFERED BY BLAIRS.AG CATTLE COMPANY

**82**

BBC 545H

27/02/2020

2146187

RED SOO LINE POWER EYE 161X  
**RED DAMAR TRUMP C512**  
 RED DAMAR OH BABY W168

RED COCKBURN RIBEYE 308U  
 RED TR LYNN 301R  
 RED FINE LINE MULBERRY 26P  
 RED T-S OLIVIA 706P

XO CROWFOOT 0102X  
**GOLDEN SUNSET PIEBIRD 3C**  
 RED OLE PIEBIRD 154X

RED CROWFOOT MOONSHINE 8081U  
 XO CROWFOOT BLACKBIRD 8810U  
 RED CROWFOOT OLE'S OSCAR 2042M  
 RED OLE PIEBIRD 95U

CE	BW	WW	YW	MILK
6.0	0.5	30	55	22

Outcross Alert!! Take special note of the black/red carrier dam in Golden Sunset Piebird 3C. When you add Damar Trump to the mix you should expect added length and performance and that's what he has done here. You will easily find her when you come for a presale tour or on sale day.

**AI Bred on May 13, 2021 to Duff Red Blood. Exposed to BMRA MR Detour 020 from May 27-July 29, 2021. Favorable to Pasture due early March.**



Red Damar Trump C512 - Sire



*Lot 83*

# RED BLAIR'S KURUBA DE 557H

OFFERED BY BLAIRS.AG CATTLE COMPANY

Grab hold of the chance to add some gorgeous Kuruba to your program. We were fortunate to purchase the WCR Kuruba 2084Z female at the WCR dispersal to add to our donor program. Combine the highly maternal WCR Kuruba 2084Z and the extremely popular and proven KJHT PTO 6717 and you get this dark red, long made female that I believe will possess an excellent udder and make a donor cow.

**AI Bred on May 13, 2021 to Duff Red Blood. Exposed to BMRA MR Detour 020 from May 27-July 29, 2021. Favorable to AI due late February.**



Kuruba 2084Z- Dam

**83**

BBC 557H	28/02/2020	2196361
RED SOO LINE POWER EYE 161X	RED TR LYNN 301R	RED COCKBURN RIBEYE 308U
<b>RED KJHT POWER TAKE OFF</b>	RED NORTHLINE FAT TONY 605U	RED SRA PICABO PROMISE
RED SRA PAINTBUCKET	RED RMJ REDMAN 1T	RED LAZY MC BESS 12S
RED LAZY MC CC DETOUR 2W	RED CROWFOOT BIG DADDY 2058M	RED CROWFOOT KURUBA 1208L
<b>RED WCR MISS KURUBA DE 2084Z</b>		
RED CROWFOOT KURUBA 4179P		

CE	BW	WW	YW	MILK
	0.6	34	68	23

MRLA Resource 137E daughters are gaining tremendous popularity around the country and this gem combines the Mar Mac Reba 49W cow family with the outcross Resource 137E. I often recall a comment from the hotel at an SAV sale where I over heard one rancher saying to another that "there is no such thing as too much Resource in a program".

**AI Bred on May 13, 2021 to Duff Red Blood. Exposed to BMRA MR Detour 020 from May 27-July 29, 2021. Favorable to AI due late February.**

OFFERED BY BLAIRS.AG CATTLE COMPANY



*Lot 84*

**84**

**RED BLAIR'S REBA 611H**

BBC 611H      06/03/2020      2167764

MRLA RELOAD 56C  
**RED MRLA RESOURCE 137E**  
 MRLA MISS 4422B

RED 5L GUNFIRE 1173-6966  
**RED MCRAE'S REBA 49W**  
 RED MCRAE'S REBA 66P

S A V RESOURCE 1441  
 RED MRLA MISS 641Y  
 S A V HARVESTOR 0338  
 MRLA MISS 433T  
 5L GUNS BLAZIN 637-5874  
 RED 5L SILKWOOD 9161-1173  
 RED FLYING K PRINCE 171M  
 RED MCRAE'S REBA 25J

CE	BW	WW	YW	MILK
2.0	2.1	35	71	21

The Razor daughters are rapidly making their mark in our herd and others across the land as very productive females. They have close to perfect udders and wean big time calves every time. The dam of 692H is one of our top producing Reload daughters. She has two sons in purebred herds and every daughter has been retained. A full sister to 692H was a past National Champion heifer calf and also the dam of our \$16,000 bred heifer consignment at the past Red Round Up to Ter-Ron Farms. Soxro 692H is also a ¾ sibling to Red Wilbar Helga 211E (See Lot 58). Razor worked exceptionally well on our Reloads and this heifer has the broody, maternal look with enough femininity & style that you'd expect from this cross. You can bet she'll be a very productive cow down the road. Her service sire is Red Wilbar Motivation 686H, a \$22,000 sale feature to BCR Ventures, TX. He was a feature Motivate son in our bull sale this past spring. We are very excited about the calves coming from him next year.

**AI Bed April 20, 2021 to Red Wilbar Motivation 686H (Favorable) (See Lot 76) Exposed April 24 to May 26, 2021 to Red SSS Glenfiddich 741G**

OFFERED BY WILBAR CATTLE CO



*Lot 85*

**85**

**RED WILBAR SOXRO 692H**

WJD 692H      25/02/2020      2147354

DKF ELIMINATOR 15A  
**RED DKF RAZOR 55C**  
 DKF MISS NET WORTH 21A

RED TER-RON RELOAD 703T  
**RED WILBAR SOXRO 897Z**  
 RED WILBAR SOXRO 106U

S A V ELIMINATOR 9105  
 RED DKF MISS POWER 17P  
 S A V NET WORTH 4200  
 DKF MISS POWER UP 95X  
 RED TER-RON FULLY LOADED 540R  
 RED TER-RON SAMARIA 103N  
 RED TER-RON TORNADO 157M  
 RED HEAD SOXRO 126G

CE	BW	WW	YW	MILK
-2.0	2.6	40	67	24



28B - Yankee 12W Daughter



585D - Yankee 12W Daughter

86

### RED BLAIR'S YANKEE 15H

BBC 15H      16/04/2020      2174019 OSF

RED U-2 RECKONING 149A  
**RED U-2 RENOWN 193C**  
 RED U-2 ENVIOUS 147X

RED U-2 RECON 192Y  
 RED U-2 ANEXA 271Y  
 RED U-2 DYNAMO 7021T  
 RED U-2 ENVIOUS 216M

RED BRYLOR/WSP KARWEIK 1P  
**RED WSF MS YANKEE 13T 12W**  
 RED FINE LINE YANKEE 13T

RED NORTHLINE ROB ROY 122K  
 RED DMM MISS ESSENCE 58M  
 RED FINE LINE MULBERRY 26P  
 RED FINE LINE YANKEE 14R

CE	BW	WW	YW	MILK
-7.5	4.0	51	78	22

Predictability is the word for Red Blair's Yankee 15H. A Red U2 Renown 193C x WSF Yankee 12W that provides consistency and predictability throughout her pedigree. Expect Yankee 15H to produce bulls that will be at the top of your pen.

**AI Bred on May 13 to Duff Red Blood. Exposed to BMRA MR Detour 020 from May 27-July 29. Favorable to Pasture. due mid April.**  
 OFFERED BY BLAIRS.AG CATTLE COMPANY

87

### RED BLAIR'S FAITH 13H

BBC 13H      13/04/2020      2173801

RED U-2 RECKONING 149A  
**RED U-2 RENOWN 193C**  
 RED U-2 ENVIOUS 147X

RED U-2 RECON 192Y  
 RED U-2 ANEXA 271Y  
 RED U-2 DYNAMO 7021T  
 RED U-2 ENVIOUS 216M

RED FINE LINE MULBERRY 26P  
**RED BLAIR'S FAITH 10T**  
 RED BAKERS FAITH 8L

RED COMPASS MULBERRY 449M  
 RED DUS FAYETTE 8G  
 RED BAKERS CENTURY  
 RED BROX FAITH 17C

CE	BW	WW	YW	MILK
-10.5	7.4	56	89	20

Faith 13H is a performance driven pedigree and she shows it. Expect her to mature into a cow that raises calves that slam down the scale and has the potential to bring home those heavy bull calves for the commercial buyer.

**AI Bred on May 13 to Duff Red Blood. Exposed to BMRA MR Detour 020 from May 27-July 29.**

**Favorable to AI due late February.**  
 OFFERED BY BLAIRS.AG CATTLE COMPANY



Red Blair's Faith 10T - Dam Lot 87





## RED BAR E-L Meg 169Z

WOW, is all I can say as it relates to the chance to pick from (5) full sisters off the great Meg 169Z. We have always been committed to genetic advancement through extensive embryo use and you will often find donors in our pedigrees from Dave & Lynn Longshore. We very much respect Dave and believe genetics from his program are the right kind to match up with our goals and the results are evident in the likes of Bar E-L Erica 74A, Bar E-L Kassie 129B and Bar E-L Meg 169Z.

When we purchased a flush on Bar E-L Meg 169Z we knew that was an opportunity to match her up with Red Ter-Ron Santana 73C. The fact that we have (5) full sisters selling is a living testament to how well that mating worked and how powerful the Meg 169Z donor is and I think you will find the udder quality is second to none.

Full Sib daughters sell as Lots 88, 89, 90, 91 & 92.

OFFERED BY BLAIRS.AG CATTLE COMPANY



*The Meg's sell as Lots 88-92*



Full Sibs to lot 89-92  
 AI Bred on May 13, 2021 to Red  
 Damar Trump. Exposed to Red  
 Cockburn Arsenal 8001 from May  
 26-July 29, 2021. Favorable to AI  
 due late February.  
 OFFERED BY BLAIRS.AG  
 CATTLE  
 COMPANY



SANTANA 73C-SIRE OF LOT 88

**88**

**RED BLAIR'S MEG 44F**

BBC 44F 11/04/2018 2049288

RED TER-RON PARKER 34A  
**RED TER-RON SANTANA 73C**  
 RED TER-RON BRANDY 162Y

RED TOWAW INDEED 104H  
**RED BAR-E-L AB MEG 169Z**  
 RED BAR-E-L MEG 85N

TER-RON PARK PLACE 18Y  
 RED TER-RON DIAMOND MIST 164Y  
 RED U-2 BIG LEAGUE 544R  
 RED TER-RON BRANDY 211M  
 RED CC EXPANSION 5E  
 RED TOWAW MOLLY 67C  
 RED YY RED KNIGHT 640F  
 RED BAR-E-L MEG 035G

CE	BW	WW	YW	MILK
3.0	1.4	36	58	22

**88A**

**RED BLAIR'S MEG 160J**

BBC 160J 26/03/2021 2195997

RED SIX MILE GAME FACE 164Y  
**RED TWG TOMMY JACK 166A**  
 RED DAMAR PASSION X166

RED TER-RON SANTANA 73C  
**RED BLAIR'S MEG 44F**  
 RED BAR-E-L AB MEG 169Z

RED VGW GAME PLAN 816  
 RED SIX MILE LAKOTO 35W  
 RED FINE LINE MULBERRY 26P  
 RED DFRA JOPLIN 501L  
 RED TER-RON PARKER 34A  
 RED TER-RON BRANDY 162Y  
 RED TOWAW INDEED 104H  
 RED BAR-E-L MEG 85N

CE	BW	WW	YW	MILK
8.0	0.0	35	56	22



Pay attention here. Another example of the how well the Meg 169Z x Santana daughters work. This TWG Tommy Jack 166A daughter comes off my favourite of the all the Meg daughters and she is proving why as Red Blair's Meg 160J is only a March 26th baby but will be very easy to find on sale day. With Tommy Jack on Meg 169Z she should have a drop dead gorgeous udder. Mark your catalog with a bunch of stars on this one.  
 OFFERED BY BLAIRS.AG CATTLE COMPANY

Full Sibs to lot 86, 87, 88 & 90.  
 The question is, do you have  
 the foresight to buy them all?  
**AI Bred on May 13 to Red Damar  
 Trump. Exposed to Red Cockburn  
 Arsenal 8001 from May 26-July  
 29. Favorable to Pasture exposure  
 due early March**  
 OFFERED BY BLAIRS.AG  
 CATTLE COMPANY



**89**

**RED BLAIR'S MEG 50F**

BBC 50F      13/04/2018      2049432

RED TER-RON PARKER 34A  
**RED TER-RON SANTANA 73C**  
 RED TER-RON BRANDY 162Y

RED TOWAW INDEED 104H  
**RED BAR-E-L AB MEG 169Z**  
 RED BAR-E-L MEG 85N

TER-RON PARK PLACE 18Y  
 RED TER-RON DIAMOND MIST 164Y  
 RED U-2 BIG LEAGUE 544R  
 RED TER-RON BRANDY 211M  
 RED CC EXPANSION 5E  
 RED TOWAW MOLLY 67C  
 RED YY RED KNIGHT 640F  
 RED BAR-E-L MEG 035G

CE	BW	WW	YW	MILK
-1.0	2.5	37	59	20

**89A**

**RED BLAIR'S MEG 114J**

BBC 144J      23/02/2021      2196002

RED SOO LINE POWER EYE 161X  
**RED DAMAR TRUMP C512**  
 RED DAMAR OH BABY W168

RED TER-RON SANTANA 73C  
**RED BLAIR'S MEG 50F**  
 RED BAR-E-L AB MEG 169Z

RED COCKBURN RIBEYE 308U  
 RED TR LYNN 301R  
 RED FINE LINE MULBERRY 26P  
 RED T-S OLIVIA 706P  
 RED TER-RON PARKER 34A  
 RED TER-RON BRANDY 162Y  
 RED TOWAW INDEED 104H  
 RED BAR-E-L MEG 85N

CE	BW	WW	YW	MILK
3.0	1.6	31	55	20

Red Blair's Meg 114J is a  
 perfect example of what to  
 expect out of the (5) full sib  
 Meg 169Z x Santana 73C  
 daughters. This Damar Trump  
 daughter is everything you  
 want in a Red Angus female  
 and has the stacked pedigree  
 to back it up.  
 OFFERED BY BLAIRS.AG CATTLE  
 COMPANY



90

**RED BLAIR'S MEG 45F**

BBC 45F 11/04/2018 2049280

RED TER-RON PARKER 34A  
**RED TER-RON SANTANA 73C**  
 RED TER-RON BRANDY 162Y

RED TOWAW INDEED 104H  
**RED BAR-E-L AB MEG 169Z**  
 RED BAR-E-L MEG 85N

TER-RON PARK PLACE 18Y  
 RED TER-RON DIAMOND MIST 164Y  
 RED U-2 BIG LEAGUE 544R  
 RED TER-RON BRANDY 211M  
 RED CC EXPANSION 5E  
 RED TOWAW MOLLY 67C  
 RED YY RED KNIGHT 640F  
 RED BAR-E-L MEG 035G

CE	BW	WW	YW	MILK
2.0	1.4	36	57	22

AI Bred on May 13, 2021 to Red Damar Trump. Exposed to Red Cockburn Arsenal 8001 from May 26-July 29, 2021. Favorable to AI due late February.



Red Ter-ron Santana 73C - Sire of lots 90, 91, 92

91

**RED BLAIR'S MEG 59F**

BBC 59F 14/04/2018 2049437

RED TER-RON PARKER 34A  
**RED TER-RON SANTANA 73C**  
 RED TER-RON BRANDY 162Y

RED TOWAW INDEED 104H  
**RED BAR-E-L AB MEG 169Z**  
 RED BAR-E-L MEG 85N

TER-RON PARK PLACE 18Y  
 RED TER-RON DIAMOND MIST 164Y  
 RED U-2 BIG LEAGUE 544R  
 RED TER-RON BRANDY 211M  
 RED CC EXPANSION 5E  
 RED TOWAW MOLLY 67C  
 RED YY RED KNIGHT 640F  
 RED BAR-E-L MEG 035G

CE	BW	WW	YW	MILK
1.0	1.9	37	59	22

AI Bred on May 13, 2021 to Red Damar Trump. Exposed to Red Cockburn Arsenal 8001 from May 26-July 29, 2021. Favorable to AI due late February.

92

**RED BLAIR'S MEG 54F**

BBC 54F 14/04/2018 2049358

RED TER-RON PARKER 34A  
**RED TER-RON SANTANA 73C**  
 RED TER-RON BRANDY 162Y

RED TOWAW INDEED 104H  
**RED BAR-E-L AB MEG 169Z**  
 RED BAR-E-L MEG 85N

TER-RON PARK PLACE 18Y  
 RED TER-RON DIAMOND MIST 164Y  
 RED U-2 BIG LEAGUE 544R  
 RED TER-RON BRANDY 211M  
 RED CC EXPANSION 5E  
 RED TOWAW MOLLY 67C  
 RED YY RED KNIGHT 640F  
 RED BAR-E-L MEG 035G

CE	BW	WW	YW	MILK
1.0	1.8	37	58	22

AI Bred on May 13, 2021 to Red Damar Trump. Exposed to Red Cockburn Arsenal 8001 from May 26-July 29, 2021. Favorable to AI due late February.



Lot 92

This is a mating of the performance driven Red Damar Trump C512 with the highly proven WSF Yankee 12W donor. Imagine the possibilities here. I expect to see plenty of successful offspring of this donor prospect.

**AI Bred on May 21, 2021 to Red Damar Trump. Exposed to Red Cockburn Arsenal 8001 from May 26-July 29, 2021. Favorable to AI due late February.**

OFFERED BY BLAIRS.AG CATTLE COMPANY



*Lot 93*

**93**

### RED BLAIR'S YANKEE 622F

BBC 622F      10/03/2018      2078380 OSF

RED SOO LINE POWER EYE 161X  
**RED DAMAR TRUMP C512**  
 RED DAMAR OH BABY W168

RED BRYLOR/WSP KARWEIK 1P  
**RED WSF MS YANKEE 13T 12W**  
 RED FINE LINE YANKEE 13T

RED COCKBURN RIBEYE 308U  
 RED TR LYNN 301R  
 RED FINE LINE MULBERRY 26P  
 RED T-S OLIVIA 706P  
 RED NORTHLINE ROB ROY 122K  
 RED DMM MISS ESSENCE 58M  
 RED FINE LINE MULBERRY 26P  
 RED FINE LINE YANKEE 14R

CE	BW	WW	YW	MILK
6.0	1.3	31	58	24

Blair's Priscilla 53F combines two very successful donors in our program by bringing WSF Yankee 12W and Brylor Priscilla 67W together. 67W is the dam to Red Blair's Priscilla 44Z that has been a standout for Baxter Blair. This combination of Red Blair's Bingo and Priscilla 67W has produced a powerfully made female with loads of potential.

**AI Bred on May 13, 2021 to Red Damar Trump. Exposed to Red Cockburn Arsenal 8001 from May 26-July 29, 2021. Favorable to AI due late February.**

OFFERED BY BLAIRS.AG CATTLE COMPANY



*Lot 94*

**94**

### RED BLAIR'S PRISCILLA 53F

BBC 53F      14/04/2018      2105286 OSF

RED RINGSTEAD KARGO 215U  
**RED BLAIR'S BINGO 581B**  
 RED WSF MS YANKEE 13T 12W

RED BRYLOR SDL RICHTER 212R  
**RED BRYLOR PRISCILLA 67W**  
 RED BRYLOR PRISCILLA 304S

RED RINGSTEAD KARGO 107M  
 RED RINGSTEAD MS EQUAL 589P  
 RED BRYLOR/WSP KARWEIK 1P  
 RED FINE LINE YANKEE 13T  
 RED BRYLOR SDL STALLION 150N  
 RED XXX LAKME 70M  
 RED BRYLOR NEW TREND 22D  
 RED WIL-SEL PRISCILLA R. 21K

CE	BW	WW	YW	MILK
1.0	2.3	42	70	21



**95**

**RED BLAIR'S CORA 2F**

BBC 2F                      03/03/2018                      2049416

- RED SIX MILE GRAND SLAM 130Z
- RED SIX MILE SIGNATURE 295B**
- RED SELMA OF SIX MILE 358X
- RED TER-RON TORNADO 157M
- RED WILBAR CORA 443P**
- RED HEAD CORA 159L
- RED VGW GAME PLAN 816
- RED SIX MILE REBECCA 216X
- RED SIX MILE UNLEASHED 595U
- RED RSL MISS SELMA 384F
- RED TER-RON MAMBO 28K
- RED BLUE SPRUCE LARKABA 157A
- RED TOWAW ZAMA 148F
- RED CUMNOCK CORA 423B

CE	BW	WW	YW	MILK
0.0	2.7	40	70	21

You will have to look far and wide to find a female that has had more impact in the Red Angus breed across North America than Red Wilbar Cora 443P. This Six Mile Signature daughter has cow written all over her. Make Dec 20th the day to add some of the rare & highly maternal Cora 443P to your program.

**AI Bred on May13, 2021 to Red Damar Trump. Exposed to Red Cockburn Arsenal 8001 from May 26-July 29, 2021. Favorable to AI due late February.**

OFFERED BY BLAIRS.AG CATTLE COMPANY



**96**

**RED BLAIR'S KAPI 680F**

BBC 680F                      20/03/2018                      2024809

- RED SIX MILE GAME FACE 164Y
- RED TWG TOMMY JACK 166A**
- RED DAMAR PASSION X166
- RED BLAIR'S DAYTONA 116U
- RED BLAIRS KAPI 217Z**
- RED JCC KAPI 109R
- RED VGW GAME PLAN 816
- RED SIX MILE LAKOTO 35W
- RED FINE LINE MULBERRY 26P
- RED DFRA JOPLIN 501L
- RED FINE LINE MULBERRY 26P
- RED JCC LASS 41N
- RED JCC WARRIOR 5K
- RED TOP LINE KAPI 26L

CE	BW	WW	YW	MILK
-1.0	2.5	34	60	22

Pay attention here. This TWG Tommy Jack 166A daughter really puts it all together and goes back to the Lass 41N and Kapi 109R females that we purchased at the Jackson Cattle Co. dispersal.

**AI Bred on May13, 2021 to Red Damar Trump. Exposed to Red Cockburn Arsenal 8001 from May 26-July 29, 2021. Favorable to AI due late February.**

OFFERED BY BLAIRS.AG CATTLE COMPANY



**97**

**RED BLAIR'S SEREBL 505F**

BBC 505F                      04/02/2018                      2028232

- RED RINGSTEAD KARGO 107M
- RED RINGSTEAD KARGO 215U**
- RED RINGSTEAD MS EQUAL 589P
- RED BRYLOR JKC GHOST RIDER108Y
- RED WRAZ SEREBL 2D**
- RED KMAC SEREBL 95N
- RED COMPASS KARGO 83K
- RED GET-A-LONG MRS. YOUNG 095
- RED SSS YUKON 440K
- RED SSS MISS EQUAL 495G
- RED FINE LINE MULBERRY 26P
- RED BRYLOR CHEROK 22L
- RED BASIN SENSATION 702E
- RED VVVD SEREBL 66L

CE	BW	WW	YW	MILK
-2.0	4.7	45	73	18

Kargo 215U has proven himself across the continent as the sire to raise predictable females and bulls both. Kargo semen is 100% sold out in Canada so you won't want to miss a shot at adding his genetics to your program.

When you combine Kargo and Ghost Rider you get a maternal powerhouse.

**AI Bred on May13, 2021 to Red Damar Trump. Exposed to Red Cockburn Arsenal 8001 from May 26-July 29, 2021. Favorable to AI due late February.**

OFFERED BY BLAIRS.AG CATTLE COMPANY

Check her out!!!

A Soo Line Banberry 238R direct daughter off the popular high performing Damar Trump C512. Take a good long look here as Banberry 238R genetics are now impossible to find and highly sought after.

**AI Bred on May13, 2021 to Red Ringstead Kargo. Exposed to Red Cockburn Arsenal 8001 from May 26-July 29, 2021. Favorable to AI due late February.**

OFFERED BY BLAIRS.AG CATTLE COMPANY



Baneberry 523R- Dam to Lot 96



98

## RED BLAIR'S BANEBERRY 602F

BBC 602F

08/03/2018

2053267

RED SOO LINE POWER EYE 161X  
**RED DAMAR TRUMP C512**  
 RED DAMAR OH BABY W168

RED COCKBURN RIBEYE 308U  
 RED TR LYNN 301R  
 RED FINE LINE MULBERRY 26P  
 RED T-S OLIVIA 706P  
 RED FORSTER CHIEF 7182ET

RED CRESCENT CREEK FRCHIEF 75L  
**RED SOO LINE BANEBERRY 5238**  
 RED SOO MS BANEBERRY 3193

RED CRESCENT CREEK DUCHESS 155  
 RED BASIN SENSATION 702E  
 RED SIX MILE BANEBERRY 362J

CE	BW	WW	YW	MILK
10.0	-0.8	29	47	27

99

## RED BLAIR'S FAITH 606F

BBC 606F

08/03/2018

2028303

RED SOO LINE POWER EYE 161X  
**RED DAMAR DOCTOR C501**  
 RED DAMAR OH BABY W168

RED COCKBURN RIBEYE 308U  
 RED TR LYNN 301R  
 RED FINE LINE MULBERRY 26P  
 RED T-S OLIVIA 706P

RED TER-RON RELOAD 703T  
**RED BLAIRS FAITH 65Y**  
 RED BAKERS FAITH 8L

RED TER-RON FULLY LOADED 540R  
 RED TER-RON SAMARIA 103N  
 RED BAKERS CENTURY  
 RED BROX FAITH 17C

CE	BW	WW	YW	MILK
3.0	1.4	28	51	15

Top females stack donor females on top of donor females. Red Blair's Faith 606F does just that and puts it all together is a gorgeous package. Expect udder quality and calving ease from 606F.

**AI Bred on May13, 2021 to Red Ringstead Kargo. Exposed to Red Cockburn Arsenal 8001 from May 26-July 29, 2021. Favorable to AI due late February.**

OFFERED BY BLAIRS.AG CATTLE COMPANY



Red Blairs Faith 65Y - Dam of Lot 99



We were fortunate to acquire the Red Sunberry Valley Private Stock bull a few years ago from Darren Vancuren and he has left us some excellent cows that are maternal and dark red. The Roxie cow line is well know at our place for length of body and this daughter fits the model perfectly. **AI Bred on May13 to Red Damar Trump. Exposed to Red Cockburn Arsenal 8001 from May 26-July 29. Favorable to AI due late February.** OFFERED BY BLAIRS.AG CATTLE COMPANY

**100**

**RED BLAIR'S ROXIE 675F**

BBC 675F      18/03/2018      2028407

RED MRLA 61X  
**RED SUNBERRY PRIVATE STOCK**  
 RED MRLA MISS 2475Z

RED PZC TMAS MR TONY 2795  
**RED BLAIR'S ROXIE 723D**  
 RED BLAIRS ROXIE 105Y

RED MRLA ECONOMY 810  
 RED MRLA MISS 580U  
 RED BAR-E-L WARDEN 144W  
 RED GARA DUCHESS 75P  
 RED NORTHLINE FAT TONY 605U  
 RED WHITSTONE LANA V150  
 RED RINGSTEAD KARGO 215U  
 RED WLC ROXIE 66P

CE	BW	WW	YW	MILK
-1.0	3.8	49	83	20

**101**

**RED BLAIR'S PRINCESS 724F**

BBC 724F      03/04/2018      2028418

RED MRLA 61X  
**RED SUNBERRY PRIVATE STOCK**  
 RED MRLA MISS 2475Z

RED SSS AMBUSH 771X  
**RED BLAIR'S PRINCESS 38D**  
 RED MCRAES PRINCESS 42X

RED MRLA ECONOMY 810  
 RED MRLA MISS 580U  
 RED BAR-E-L WARDEN 144W  
 RED GARA DUCHESS 75P  
 RED FLYING K AMBUSH 121U  
 RED SSS JOE 369S  
 RED MCRAES VISION 65T  
 RED BUCK VALLEY PRINCESS 11S

CE	BW	WW	YW	MILK
1.0	3.0	50	81	22



You need to take some time to analyze Red Blair's Princess 724F. She has the look for sure but her pedigree is super cool with both Bar E-L Warden & SSS Ambush. **AI Bred on May13 to Red Damar Trump. Exposed to Red Cockburn Arsenal 8001 from May 26-July 29. Favorable to AI due late February.** OFFERED BY BLAIRS.AG CATTLE COMPANY





Red Double B Lucky Strike 9001-Sire



Red Rainbow Lark 9E  
2018 National Champion Red Angus Female  
& Multiple Time Winner



*Lot 102*

Talk about proven genetics. Lark 9E took the show circuit by storm as a yearling heifer where she hung banners all year against every breed, finally being crowned the 2017 National Champion Red Angus Female. She's developed into the exact kind of cow we have built our program around; moderate, huge ribbed, sound, and striking. Lucky Strike 9001 was a fan favourite in 2019, being named the President's Classic Champion Red Angus Bull and demanding \$20,000 at the Power & Perfection to our great partners, Tres Marias Ranch (Argentina) and El Sauz (Mexico). His first calf crop has immensely exceeded our expectations and will highlight our show calves this fall. Having both the Lark and Larkaba cow families in one mating is a highly sought-after genetic opportunity, so we have no doubt this embryo package could be a huge stepping stone for any red Angus operation.

**Guaranteed 2 pregnancies out of each lot if implanted by a Certified ET Technician. Stored at Bow Valley Genetics. Exportable**

**102**

**RED DOUBLE B LUCKY STRIKE 9001 X  
RED RAINBOW LARK 9E**

PACKAGE OF FOUR (4) EMBRYOS

- RED BLAIR'S BINGO 556D
- RED DOUBLE B LUCKY STRIKE 9001
- RED BLAIR'S LARKABA 42A
- RED MOOSE CREEK WESTON 23B
- RED RAINBOW LARK 9E
- RED STEWART LARK 602S

- RED BLAIR'S BINGO 581B
- RED BLAIR'S DYNAMINT 46B
- RED WHEEL GANGSTER 31Y
- RED BLAIRS LARKABA 101Y
- RED SVR GANGSTER 44X
- RED MOOSE CREEK LANA 108Z
- RED LAZY MC SMASH 41N
- RED SVR MISS LARK 100P

(PE)	CE	BW	WW	YW	MILK
0.58		3.1	43	68	28

When choosing what embryo packages to put in the sale, these babies just made sense. Alice 131D has been an awesome breeding piece for us over the years. Her picture-perfect udder, maternal body shape, and added look are things we could fill a thousand pastures with. She raised a stellar bull calf that will highlight our sale bulls next spring, and these embryos are a full sibling to one of this year's sale features, Red Double B Alice 118. Autograph 2D was the talk of the barn in 2016, being named a Canadian Western Agribition division winner and finding himself a new home at Six Mile Ranch. Combining the prolific Alice and Larkaba cow families has a ton of potential, so do not miss out on the chance to get your hands on an already-proven mating.

**Guaranteed 2 pregnancies out of each lot if implanted by a Certified ET Technician. Stored at Bow Valley Genetics. Exportable**

**103**

**RED DOUBLE B 6M AUTOGRAPH 2D X  
RED SIX MILE ALICE 131D**

PACKAGE OF FOUR (4) EMBRYOS

- RED SIX MILE SIGNATURE 295B
- RED DOUBLE B 6M AUTOGRAPH 2D
- RED BLAIR'S LARKABA 42A
- RED SIX MILE TAURUS 519A
- RED SIX MILE ALICE 131D
- RED TER-RON ALICE 119B

- RED SIX MILE GRAND SLAM 130Z
- RED SELMA OF SIX MILE 358X
- RED WHEEL GANGSTER 31Y
- RED BLAIRS LARKABA 101Y
- RED SIX MILE GAME FACE 164Y
- RED SIX MILE SHAWNEE 116T
- RED SIX MILE SURE SHOT 195Z
- RED TER-RON ALICE 137Z

(PE)	CE	BW	WW	YW	MILK
-2		3.1	31	48	27



Red Double B 6M Autograph 2D-Sire



Red Double B Alice 118-Full Sister to Embryos



*Lot 103*



Grand Champion Red Angus Bull at Farm Fair International 2021. Stop by our stall and check him out at CWA. Qualifier for Canadian Supreme Challenge.  
OFFERED BY BLAIRSWEST LAND & CATTLE



## 104 A-J

### RED U2 REVIVAL 147G

DUA 147G 17/01/2019 2102143

- |                               |                               |
|-------------------------------|-------------------------------|
| A - Packge of Ten (10) Straws | F - Packge of Ten (10) Straws |
| B - Packge of Ten (10) Straws | G - Packge of Ten (10) Straws |
| C - Packge of Ten (10) Straws | H - Packge of Ten (10) Straws |
| D - Packge of Ten (10) Straws | I - Packge of Ten (10) Straws |
| E - Packge of Ten (10) Straws | J - Packge of Ten (10) Straws |

STORED AT BOW VALLEY GENETICS, BROOKS, AB  
Exportable to Australia/USA

MRLA RELOAD 56C  
RED MRLA RESOURCE 137E  
MRLA MISS 4422B

RED U-2 BIG LEAGUE 544R  
RED U-2 BELA 8200U  
RED U-2 BELA 934J

S A V RESOURCE 1441  
RED MRLA MISS 641Y  
S A V HARVESTOR 0338  
MRLA MISS 433T  
RED LCC MAJOR LEAGUEA502M  
RED U-2 ANEXA 09E  
RED BRYLOR FLUTIE 24F  
RED U-2 BELA 21F

CE	BW	WW	YW	MILK
1.0	2.1	41	72	19

## 105

### COLEMAN BRAVO 6313

IMP 6313D 04/07/2016 2065368

#### ONE (1) PACKAGE OF 3 UNITS OF SEMEN

STORED AT BOW VALLEY GENETICS, BROOKS, AB  
Canada Only

O C C PAXTON 730P  
COLEMAN CHARLO 0256  
BOHI ABIGALE 6014

CONNEALY ONWARD  
COLEMAN DONNA 714  
COLEMAN DONNA 386

O C C FOCUS 813F  
O C C BLACKBIRD 736K  
SITZ TRAVELER 8180  
S A V ABIGALE 6062  
CONNEALY LEAD ON  
ALTUNE OF CONANGA 6104  
BASIN RAINMAKER 654X  
KMK DONNA J311

CE	BW	WW	YW	MILK
15.0	-0.5	55	1.1	23

OFFERED BY BLAIRS.AG CATTLE COMPANY

## 106 A-B

### SOO LINE LOCOMOTIVE 1403

SOO 403Y 01/11/2011 1695524

- |                               |                               |
|-------------------------------|-------------------------------|
| A - Packge of Ten (10) Straws | B - Packge of Ten (10) Straws |
|-------------------------------|-------------------------------|

STORED AT BOW VALLEY GENETICS, BROOKS, AB

Canada/USA

HF KODIAK 5R  
SOO LINE MOTIVE 9016  
TLA BEAUTY 5R

S A V FINAL ANSWER 0035  
SHADY BROOK EVERENTENSE 2039  
SCR EVERELDA ENTENSE 748

SANDY BAR ADVANTAGE 43M  
WILBAR RUBY 955N  
RR 7407 RAINMAKER 2154  
TERRLENE BEAUTY 35F  
SITZ TRAVELER 8180  
S A V EMULOUS 8145  
N BAR EMULATION EXT  
BT EVERELDA ENTENSE 579L

CE	BW	WW	YW	MILK
4.0	0.8	43	81	25

OFFERED BY BLAIRS.AG CATTLE COMPANY

# 107A - F

## BLAIR'S ROCCO 268F

BBC 268F      22/02/2018      2042474

- A - Packge of Ten (10) Straws      D - Packge of Ten (10) Straws
- B - Packge of Ten (10) Straws      E - Packge of Ten (10) Straws
- C - Packge of Ten (10) Straws      F - Packge of Ten (10) Straws

STORED AT BOW VALLEY GENETICS, BROOKS, AB  
Canada Only

RITO 707 OF IDEAL 3407 7075	R R RITO 707
S A V RENOWN 3439	IDEAL 3407 OF 1418 076
S A V BLACKCAP MAY 4136	<b>S A V 8180 TRAVELER 004</b>
	S A V MAY 2397
BAR-E-L NATURAL LAW 52Y	S A V BISMARCK 5682
<b>BAR-E-L ERICA 74A</b>	BAR-E-L MAGNOLIA 143K
HF ERICA 339T	PEAK DOT FAME 2N
	HF ERICA 46P



CE	BW	WW	YW	MILK
2.0	2.3	62	119	25

OFFERED BY BLAIRS.AG CATTLE COMPANY and Skull Creek Ranch

# 108 A -B

## RED FINE LINE MULBERRY 26P

NVG 26P      31/01/2004      1237972

- A - Packge of Three (3) Straws      B - Packge of Three (3) Straws

STORED AT BOW VALLEY GENETICS, BROOKS, AB  
Canada Only

RED HR RAMBO ET 91K	RED FCC RAMBO 502
RED COMPASS MULBERRY 449M	RED HR MISS PROSPECTOR 26B
RED BRYLOR MISS ROC 20H	<b>RED LARSON RED LIGHTNING</b>
	RED CRCC MISS ROC 368D
RED SILVEIRAS REDFORD	SILVEIRAS PRESLEY
<b>RED DUS FAYETTE 8G</b>	RICKS JUANADABURY 3000
RED MC DOUGALL FAYETTE 59A	RED MC DOUGALL CLASS OF 85 32X
	RED MC DOUGALL FAYETTE 79W



CE	BW	WW	YW	MILK
5.0	2.1	52	92	25

OFFERED BY BLAIRS.AG CATTLE COMPANY

# 109

## RED LAZY MC CC DETOUR 2W

LDEL 2W      15/01/2009      1494226

### ONE (1) PACKAGE OF 3 UNITS OF SEMEN

STORED AT BLAIR'S.AG, LANIGAN, SK  
Canada Only

RED 5L NORSEMAN KING 2291	RED VGW KING OF THE WEST
RED RMJ REDMAN 1T	RED NORSEMAN 1312 PJM
CROWFOOT KURUBA 4033P	<b>O C C HUNTER 928H</b>
	RED CROWFOOT KURUBA 2030M
RED LAZY MC SMASH 41N	RED SSS BOOMER 803B
<b>RED LAZY MC BESS 12S</b>	RED LAURON YB ROSA 11G
RED LAZY MC BESS 73N	RED SODAK PRECISION 7408-97
	RED LAZY MC AM'S BEST 11H



CE	BW	WW	YW	MILK
10.0	-0.7	34	57	27

OFFERED BY BLAIRS.AG CATTLE COMPANY



## 110 A - F

### MC CUMBER TRIBUTE 702

IMP 7E 09/01/2017 2135467

A - Package of Five (5) Straws D - Package of Five (5) Straws  
 B - Package of Five (5) Straws E - Package of Five (5) Straws  
 STORED AT BLAIR'S.AG, LANIGAN, SK  
 Canada Only

F - Package of Five (5) Straws  
 STORED AT BOW VALLEY GENETICS, BROOKS, AB  
 Canada Only

O C C TREMENDOUS 619T O C C EMBLAZON 854E  
 MC CUMBER TREMENDOUS 2008 O C C DIXIE ERICA 960H  
 MISS WIX 2022 HC MC CUMBER LEACHMAN RIGHT TIME  
 MISS WIX 7111 OF MCCUMBER  
 O C C HEADLINER 661H  
 O C C MISSING LINK 830M O C C DIXIE ERICA 946K  
**LASSIE 113 OF MC CUMBER** SINCLAIR EXTRA 4X13  
 LASSIE 935 OF MC CUMBER LASSIE 4117 OF MC CUMBER

CE	BW	WW	YW	MILK
13.0	-1.1	56	106	31

OFFERED BY BLAIRS.AG CATTLE COMPANY

## 111

### MUSGRAVE 316 STUNNER

IMP 1676D 19/02/2016 1995252

#### ONE (1) PACKAGE OF 2 UNITS OF SEMEN

STORED AT BOW VALLEY GENETICS, BROOKS, AB  
 Canada Only

CONNEALY CAPITALIST 028 S A V FINAL ANSWER 0035  
 LD CAPITALIST 316 PRIDES PITA OF CONANGA 8821  
 LD DIXIE ERICA 2053 C A FUTURE DIRECTION 5321  
 LD DIXIE ERICA OAR 0853  
 CONNEALY FINAL PRODUCT  
 MCATL PURE PRODUCT 903-55 M A ESTA 55-252  
**MCATL BLACKBIRD 831-1378** CONNEALY REFLECTION  
 MCATL BLACKBIRD 1378-573 MA BLACKBIRD 573

CE	BW	WW	YW	MILK
7.0	0.1	70	118	29

OFFERED BY BLAIRS.AG CATTLE COMPANY

## 112 A - B

### SIX MILE DESERT STORM 94D

SIXM 94D 19/02/2016 1931953

A - Package of Ten (10) Straws B - Package of Ten (10) Straws

STORED AT BOW VALLEY GENETICS, BROOKS, AB  
 Canada Only

S TITLEST 1145 RA LINCOLN W144  
 S CORA 572  
 S A V 004 PREDOMINANT 4438  
 HF TIBBIE 35K  
 S A V 8180 TRAVELER 004  
 S A V BESSIE HEIRESS 1184  
**SIX MILE FALLING STAR 219Y** ROSE HILL FAME 4K  
 ROSE HILL DARK STAR 22P ROSE HILL DARK STAR 31H

CE	BW	WW	YW	MILK
8.0	1.3	48	97	25

OFFERED BY BLAIRS.AG CATTLE COMPANY

# 113 A - B

## S A V RESOURCE 1441

IMP 1441Y 07/01/2011 1707295

A - Package of Four (4) Straws B - Package of Four (4) Straws

STORED AT BOW VALLEY GENETICS, BROOKS, AB  
Canada Only

R R RITO 707	RITO N BAR
RITO 707 OF IDEAL 3407 7075	ERISKAY OF ROLLIN ROCK 3
IDEAL 3407 OF 1418 076	IDEAL 1418 OF 8103 4286
	IDEAL 076 OF 692 8375
S A V 8180 TRAVELER 004	SITZ TRAVELER 8180
S A V BLACKCAP MAY 4136	BOYD FOREVER LADY 8003
S A V MAY 2397	S A F 598 BANDO 5175
	S A V MAY 7238



CE	BW	WW	YW	MILK
2.0	4.0	69	132	17

OFFERED BY BLAIRS.AG CATTLE COMPANY

# 114 A - E

## HF ENTERTAINER 54H

HAMI 54H 16/01/2020 2151899

A - Package of Ten (10) Straws D - Package of Ten (10) Straws  
B - Package of Ten (10) Straws E - Package of Ten (10) Straws

STORED AT BOW VALLEY GENETICS, BROOKS, AB  
Canada Only

SCHIEFELBEIN ATTRACTIVE 4565	JMB TRACTION 292
SCHIEFELBEIN SHOWMAN 338	FROSTY ANSWER 3979
FROSTY ELBA 3745	S A V RENOWN 3439
	FROSTY UPWARD 1100
PLEASANT VALLEY LUTE 1207	PLAINVIEW LUTTON E102
HF ANNIE K 60E	CHERRY KNOLL ELSA 8014
HF ANNIE K 55B	HF THUNDERBIRD 146Y
	HF ANNIE K 125U



CE	BW	WW	YW	MILK
0.0	2.1	76	143	26

OFFERED BY BLAIRS.AG CATTLE COMPANY & Rust Mountain View Ranch

# 115

## RED BRYLOR NEW TREND 22D

LMP 22D 10/02/1994 788836

### ONE (1) PACKAGE OF 2 UNITS OF SEMEN

STORED AT BLAIR'S.AG, LANIGAN, SK  
Canada Only

V D A R NEW TREND 315	A A R NEW TREND
SSS BLACK TREND 13B	V D A R LUCY 704
RED SSS MISS DYNAMO 3W	RED SSS DYNAMO 25T
	RED SSS EMULY TOKUN 90T
RED SEAMAN CHIEF 47Y	CHOCTAW CHF 373
RED MEADOW CK MISS SEAMAN 31A	RED SEAMAN FIREFLY 88S
RED MEADOW CK PRINCESS 10W	RED COPPER PRINCE 3T
	RED MEADOW CK PRINCESS 493T

CE	BW	WW	YW	MILK
-8.0	4.0	34	69	37

OFFERED BY BLAIRS.AG CATTLE COMPANY



**BLAIRS.AG CATTLE COMPANY**

Kevin and Noreen Blair  
 Darren and Deb Blair  
 Kevin's Cell: 306-365-7922  
 kevin@blairs.ag  
 www.blairscattleco.com



*With Consignors*



**DOUBLE B ANGUS**  
 Baxter Blair  
 Baxter's Cell: 306-699-7807  
 baxteraiden@hotmail.com



**KOYLE FARMS**  
 Martin Koyle  
 Cell: 306-519-7789  
 koylefarms@gmail.com



**WILBAR CATTLE CO.**  
 Bryan and Tracey Willms  
 Owen and Kylie  
 Bryan's Cell: 306-492-7504  
 Tracey's Cell: 306-380-6772  
 wilbarcattle@gmail.com  
 www.wilbarcattle.com



**BLAIRSWEST LAND AND CATTLE**  
 Scott and Calla Blair  
 Cameron, Nolan, Maguire  
 Scott's Cell: 306-365-7649  
 Calla's Cell: 306-365-7799  
 Maguire's Cell: 306-360-7716  
 calla7799@gmail.com  
 www.blairswest.net

# Terms & Conditions

## Terms:

The terms of the sale are cash or cheque, payable at par at the sale location. The right of property shall not pass until after settlement has been made; no invoicing on buyers in attendance unless previous arrangements have been made. Every animal sells to the highest bidder and in cases of disputes the auctioneer's decision will be final. Announcements from the auction block will take precedence over the printed matter in the catalogue. Current exchange rates will be announced sale day. All monies are in Canadian funds.

## Certificate of Registration:

Each animal will carry papers issued by the Canadian Angus Association, unless otherwise specified. A certificate of registry duly transferred will be furnished to the buyer for each animal after payment has been made.

## Pedigree Estimates:

Pedigree Estimates (PE) are created on the projected mating of the animal's sire and dam based on averages of the two, creating estimated values that do not hold the same accuracy of actual EPDs issued from the association and should be used as such.

## Health:

All animals in the sale have met all necessary health requirements.

## Guarantee:

Each animal becomes the purchaser's risk immediately after the animal is sold. All animals in this sale will be sold under the terms and guarantees set forth by the Canadian Angus Association with regard to health, freedom from defects and from both reproductive and specific genetic unsoundness.

## Pregnancy Information:

All serviceable age females have been pregnancy examined by an accredited ultrasound technician, giving an estimated length of gestation. This estimated gestation period shall be used only as a guideline to calving and is not a guarantee of actual service.

## Liabilities:

All persons attend the sale at their own risk. The sellers, facility owner, auctioneer and sale manager assume no liability, legal or otherwise, for any accidents that occur. It is understood that T Bar C Cattle Co. (2013) Ltd. is acting only as a medium between buyer and seller and is not responsible for any failure on the part of either part to live up to his obligations. Neither does T Bar C Cattle Co. (2013) Ltd. assume any financial obligations to collect or enforce collection of any monies between parties and any legal action that may in exceptional cases be taken must be between the buyer and the seller. T Bar C Cattle Co. (2013) Ltd. assumes no responsibility for any credit extended by the seller to the buyer. The buyer must look to the seller for fulfillment of all guarantees and representations made hereunder.

## Delivery:

Every assistance will be given in getting your purchases home. Each animal becomes the risk of the purchaser as soon as sold.

## Phone, Mail, Wire Bids:

Bidders unable to attend the sale may phone, wire or mail their bids and instructions to the sale manager, auctioneer or special representatives. Bids must be received in sufficient time prior to the sale.

## Insurance:

Agents will be in attendance to insure your purchases. We strongly recommend that insurance is purchased for full value.

## Errors:

All announcements at sale time, written or oral, supersede any written material in the catalogue.

## Directions

½ mile west of Lanigan and  
4 miles south

70 Miles from Saskatoon  
International Airport

95 Miles from Regina  
International Airport



Return Undeliverable  
Canadian Addresses To  
T Bar C Cattle Co. Ltd.  
Box 2330  
Warman, Saskatchewan S0K 4S0



BLAIRS AG CATTLE CO.  
THE **PURSUIT** of  
**EXCELLENCE**

TUESDAY, FEBRUARY 1, 2022  
Jackson Cattle Co. Sale Facility  
Sedley, Saskatchewan  
*Bull Sale*



27<sup>th</sup> Annual Tools Of The Trade  
Angus Bull & Female  
Wednesday, March 16, 2022



**BULL SALE**  
MONDAY, MARCH 14, 2022  
DLMS TIMED AUCTION

CREATED BY

*Today's*  
Publishing